



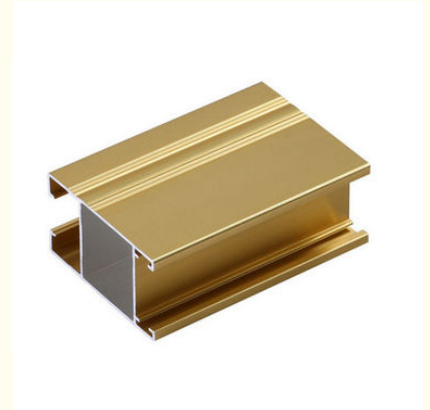
## Anodizing Deep - Processing Aluminium Window Profiles For Silding / Casement Window

### Our Product Introduction

for more products please visit us on [aluminumextrusion-profiles.com](http://aluminumextrusion-profiles.com)

#### Basic Information

- Place of Origin: China
- Brand Name: HENTEC
- Certification: CA ,CE
- Minimum Order Quantity: 1 ton
- Packaging Details: EP Paper ,kraft and pallet
- Delivery Time: 20days
- Payment Terms: T/T or L/C
- Supply Ability: 100 000 ton each month



#### Product Specification

- Material: Aluminum
- Temper: T5
- Alloy: 6063 / 6061 / 6060
- Surface: Powder Painted
- Color: Customerized
- Application: Window&Door
- Highlight: **aluminum extrusion profiles,  
extruded aluminium profiles**



## Product Description

### Anodizing Deep - Processing Aluminium Window Profiles For Silding / Casement Window

Hentec aluminum alloy construction profiles are widely applied to curtain wall frameworks, high-grade doors and windows systems, decoration, electronics, electric appliances, machinery, automobiles, medical devices and communication equipment.

#### Description:Anodizing Aluminium Window Extrusion Profiles With Deep - Processing For Silding /Casement Window

1. Material	Aluminium alloy; 6063, 6061, 6082, 6005, T5, T6,
2. Section Shapes	I, U, T, C, Z, L, H, square, round, flat, hollow, t-slot and other complicated shapes by custom design.
3. Surface treating	Mill/Anodized(oxidation)/Sand blast/Powder coating/Electrophoresis
4. Application	1) - for Window and door frames
	3) - for Building curtain glass walls
	4) - for Solar panel frames, Solar mounting / roofing brackets
	5) - for Industry assembly lines equipment.
	6) - for Heatsinks
	7) - for LED lighting
	8)- other by custom design size and dimension
5. Production lines	1) 5 melting and casting production lines
	2) 25 extruding production lines(from 500tons to 3000tons and meet different customer's demands)
	3) 6 anodizing and electrophoresis production lines
	4) 4 powder coating production lines
	5) 44 extrusion lines
	6) 4 heat insulation broken bridge production lines
	7) 2 wiredrawing and polishing production lines
6. Characteristic Services	1). OEM Service.
	2). Design according to the customers' requirements.
	3). More years' professional experience in research, manufacturing
	4). Our modern deep processing center can provide machining such as Cutting, punching, drilling, etc.
7. Quality Control	We operate the most strict quality control system, the detection is from the material, production process,
	To final product, and ensure the product quality and traceability.
8. Process	Die design→Die making→Smelting&alloying→QC→Extruding→Cutting→Heat Treatment→
	QC→Surface treatment→QC→Welding→Packing→QC→Shipping→After Sale Service
9. Standard	GB5237-2008 equal to EN12020-1.2(2001)
10. Payment	T/T: 30% for deposit
11. Packaging Detail:	Inside: Packed with plastic film to protect each piece
	Outside: Wrap to be bundles by waterproof craft paper or EPE film. Customized request available

Power Coating aluminum profile windows and door



#### Applications:

Aluminum profile used for making aluminum door .There are many colors can be selected for surface treatment .The strength can be increased by higher wall thickness . It is possible to produce according to customized design .



#### Specifications:

##### 1. Primary Technical Data

##### 1) Chemical composition

Alloy	Si	Fe	Cu	Mn	Mg	Cr	Zn	Ti	Impurity	Al
6063	0.2-0.6	0.35	0.1	0.1	0.45-0.9	0.1	0.1	0.1	0.15	Rest
6061	0.4-0.8	0.7	0.15-0.4	0.15	0.8-1.2	0.04-0.35	0.25	0.15	0.15	Rest
6060	0.3-0.6	0.1-0.3	0.1	0.1	0.35-0.6	-	0.15	0.1	0.15	Rest
6005	0.6-0.9	0.35	0.1	0.1	0.40-0.6	0.1	0.1	0.1	0.15	Rest

## 2) Mechanical property

Alloy	Temper	Tensile strength	Yield strength	Elongation
6063	T5	≥ 160Mpa	≥ 110Mpa	≥ 8%
	T6	≥ 205Mpa	≥ 180Mpa	≥ 8%
6061	T6	≥ 265Mpa	≥ 245Mpa	≥ 8%

### Competitive Advantage:

1. Top Aluminium profile manufacturer for more than 10 years in China.
2. Diverse Products used in the fields of construction, industry and deep-processing.
3. Quality Control is put in the core position of our production.
4. Customized Production shows our capability in product design and process control.
5. Perfect Customer Services include careful packaging, quick delivery and good after-sale service.



 +86-13861643436     [aluminum@hentec.com.cn](mailto:aluminum@hentec.com.cn)     [aluminumextrusion-profiles.com](http://aluminumextrusion-profiles.com)

Qinfeng Road No.555 Huashi Town Jiangyin Jiangsu China (mainland) 214421