



T Solt Industrial Aluminium Profile System Assembly Production Line For Industry

Our Product Introduction

for more products please visit us on aluminumextrusion-profiles.com

Basic Information

- Place of Origin: China
- Brand Name: HT
- Certification: CA ,CE ,ISO14001:2004, ISO9001:2000
- Minimum Order Quantity: 1 ton
- Packaging Details: Ep paper ,kraft ,pallet
- Delivery Time: 20days
- Payment Terms: T/T ,L/C
- Supply Ability: 100 000ton each month

 HENTEC



Product Specification

- Product Name: Industrial Aluminium Profile
- Alloy: 6063
- Material: Aluminum
- Surface Treatment: Fluorocarbon Powder Spray Coated /PVDF Paint, Drawbench, Steel Polished
- Deep Process: Milling, Drilling, Bending, Cutting
- Temper: T4, T5, T6
- Highlight: **modular aluminium profile system, aluminium extrusion frame system**

 HENTEC



Product Description

T Solt Industrial Aluminium Profile System Assembly Production Line for Industry

Item	Aluminium extrusion profile for Industrial assembly production line
Material	Aluminium 6000 series alloy, such as 6061, 6063, 6082 etc.
Temper	T4, T5, T6 ,T66
Thickness	General profile thickness:0.8-5.0mm; Anodized protection thickness: 8-25um; Powder coating color thickness: 40-120um.
Size	3m-6m per piece, or customized.
Shape	Square, flat, round, hollow, oval, triangle, U-profile, L-profile, T-profile, H-profile, customized available.
Surface Treatment	Mill-finish, anodized, powder coated, electrophoresis, wood grain, timber, PVDF paint, polishing, brushed.
Color	Silver, champagne, black, bronze, gold, white or customized
Application	Window and door with thermal break strips, curtain wall, glass wall, furniture, ceiling, kitchen, LED strip, transportation rail, vehicle, motor housing, machine, tent, solar panel, industrial profile, decoration profile etc.
Deep Process	CNC, drilling, milling, cutting, tapping, welding, bending, assembling.
MOQ	500 kgs for each item, usually 13-15 tons for a 20GP, 25-28 tons for a 40HQ.
OEM service	Drawing, sample or design service offer by customer.
Production Capacity	2400-3000 Metric tons monthly.
Brand Name	Hentec
Certificates and Standard	ISO9001-2008
Guarantee	Surface color can be stable for 10-20 years indoor using.
Packing Details	Inside: pack with plastic protective film to protect each piece. Outside: wrap to bundle by waterproof craft paper or EPE film, or customized
Delivery time	Die developing and sample testing: 12-18 days . Mass production: 25-30 days after confirming sample by buyer.
FOB Port	Shanghai
Payment Terms	T/T 30% for deposit, balance after the copy of BOL .
Settlement Terms	Charge by final actual weight or by drawing theoretical weight.

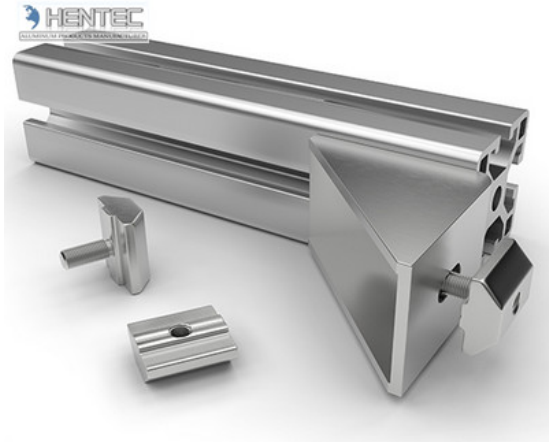


Description:

1. Material: 6063,6061,6060,6005,6005A,etc.
2. Temper: T5 or T6
3. Finish: Mill finish, anodizing, powder coating, electrophoresis, wooden transfer or pvdf/carbon-flouride coated, polishing, brushing, sand blasting
4. Various colors: Silver, bronze, black, gold, blue,grey, champagne, bright, etc.
5. Machining: Cutting, punching, drilling, tapping, milling, bending, welding, CNC etc.
6. Various in styles and sizes:
 - A) Aluminum alloy bars: 6000 series, normal material such as 6063,6005,6061,6060, special materials such as 6082 etc.
 - B) Aluminum profiles:
 - General aluminum profiles (various shapes of pipes/tubes, angles, T or U shapes etc.)
 - Industrial aluminum profiles (TV frames, Rim for bicycles and motorcycles, Heat sink profiles, Furniture, Ladder, Guide Rail, Leisure materials, Shower Room, Solar Module Frame, Motor Shell, Pipeline Integration etc.)
 - Construction aluminum profiles (Aluminum doors& windows, Sliding Windows, JB50A Door Window, Curtain Wall Frame etc.)
7. Certification: ISO9001,SGS,ROHS,TUV
8. Strong technical development ability, can provide high intensity and high ductility aluminum profiles, to meet customers' different requirements.
9. OEM service available, customized design available
10. Surface available: Mill finish, Anodized, Powder Coating, Wooden transferring, electrophoresis, heat insulation, PVDF, and deep processing
11. Certificate: ISO9001, ISO14001

Applications:

Industry Aluminum profile used in cars, trains machinery ,electronics, medical and other industrial filed . In terms of hardware, machinery, electromechanical parts, solar PV products, aluminum frames are adopt as important auxiliary materials. We also have aluminum profiles for radiators, fitness machinery, buildings, lighting instrument, windpipes, oil pipelines, for instance.



Specifications:

1.Primary Technical Data

1)Chemical composition

Alloy	Si	Fe	Cu	Mn	Mg	Cr	Zn	Ti	Impurity	Al
6063	0.2-0.6	0.35	0.1	0.1	0.45-0.9	0.1	0.1	0.1	0.15	Rest
6061	0.4-0.8	0.7	0.15-0.4	0.15	0.8-1.2	0.04-0.35	0.25	0.15	0.15	Rest
6060	0.3-0.6	0.1-0.3	0.1	0.1	0.35-0.6	-	0.15	0.1	0.15	Rest
6005	0.6-0.9	0.35	0.1	0.1	0.40-0.6	0.1	0.1	0.1	0.15	Rest

2)Mechanical property

Alloy	Temper	Tensile strength	Yield strength	Elongation
6063	T5	≥ 160Mpa	≥ 110Mpa	≥ 8%
	T6	≥ 205Mpa	≥ 180Mpa	≥ 8%
6061	T6	≥ 265Mpa	≥ 245Mpa	≥ 8%

公司图号	图 样	线密度 kg/m	公司图号	图 样	线密度 kg/m
HT-745		1.292	HT-752		1.646
HT-746		0.786	HT-753		2.952
HT-747		2.524	HT-754		2.015
HT-749		0.464	HT-767		1.522
HT-750		0.808			
HT-751		1.616			

Competitive Advantage:

- 1) Engineering design and support.
- 2) Aluminum profiles deeply processing: cutting, punching, drilling, milling, and fabricating.
- 3) High Quality system, strictly inspection during production and whole inspection before package.
- 4) Good performance, product warranty for 15 years.



FAQ For Saving Your Precious Time!

Q1: What's the thickness for anodizing? Can you do 15um?

A: Our normal thickness is about 10 um. Yes, we can do 15um and above.

Q2: What color you can do for powder coating? The thickness for powder coat?

A: We can do any color for powder coat as long as you can provide the color sample. Our normally powder coating thickness is 60-80um.

Q3: What's the delivery time for samples and mass production?

A: (1). 2-3 weeks to open the new moulds and make free samples.

(2). 3-4 weeks after receipt of deposit and confirmation of the order.

Q4: What's your MOQ?

A: Normally speaking, it's 1 ton .

Q5: What's payment terms?

A: Usually by T/T, 30% deposit and the balance paid before shipment.

Q6: What's the packing way?

A: Commonly we use plastic film and kraft paper, also we can make as per customers' requirements.



 +86-13861643436

 aluminum@hentec.com.cn

 aluminumextrusion-profiles.com

Qinfeng Road No.555 Huashi Town Jiangyin Jiangsu China (mainland) 214421