



4080 T5 Construction Aluminium Profiles For Assembly Line

Our Product Introduction

for more products please visit us on aluminumextrusion-profiles.com

Basic Information

- Place of Origin: China
- Brand Name: HENTEC
- Certification: CA ,CE ,ISO14001:2004, ISO9001:2000
- Minimum Order Quantity: 1 ton
- Packaging Details: Ep paper ,kraft ,pallet
- Delivery Time: 20days
- Payment Terms: T/T ,L/C
- Supply Ability: 100 000ton each month



Product Specification

- Product Name: Industrial Aluminium Profile
- Alloy: 6063, 6061
- Material: Aluminum
- Surface Treatment: Mill Finished, Anodized Powder Coated, Drawbench, Steel Polished
- Deep Process: Milling, Drilling, Cutting
- Temper: T5, T6
- Highlight: **4080 construction aluminium profiles, 4080 aluminium construction profiles, T5 construction aluminium profiles**



Product Description

4080 Industrial Aluminum Extrusion Profiles For Assembly Line

Product Specification

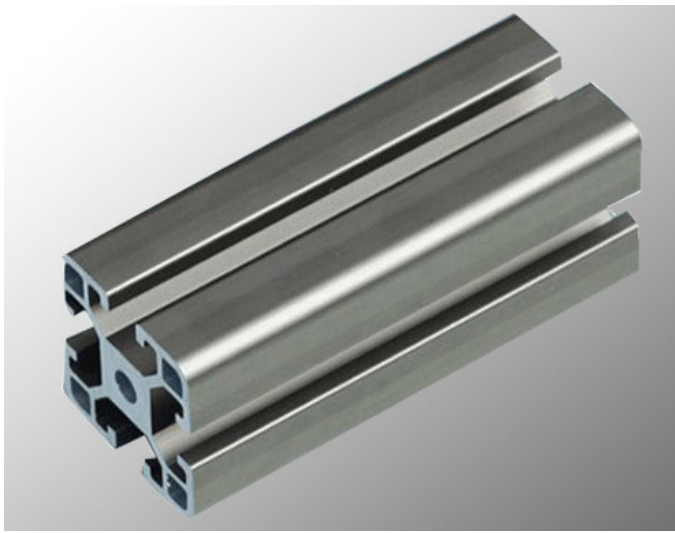
Item	Aluminum Profile System
Material	6061,6063 ,6082 etc.
Size / Thickness	General profiles thickness from 0.8 to 5.0mm, length from 3m-6m or customized available; Anodized protection film thickness from 8~25 um, powder coating from 40 ~ 120 um.
Shape	square, round, t shaped, rectangular, customized
Surface treatment	Mill finishes;Anodized; Powder coated;Wooden grain, Machine/Acid polished and etc .
Colors	silver, black, blue, wood color, RAL powder coating color and so on
MOQ	500kgs for each item
FOB Port	Shanghai
payment terms	T/T 30% for deposit, balance before shipping.
settlement term	Charge by final actual weight or by drawing theoretical weight.
Certificate and Standard	EN755, ASTM B221, DIN Standard

TABLE OF CHEMICAL COMPOSITION OF ALUMINUM ALLOY

Alloy	Si	Mg	Fe	Cu	Mn	Zn	Cr	Ti	Al
6063	0.2-0.6	0.45-0.9	< 0.35	< 0.1	< 0.1	< 0.1	< 0.1	< 0.1	Surplus
6061	0.4-0.8	0.8-1.2	< 0.7	0.15-0.4	< 0.15	< 0.25	0.04-0.35	< 0.15	Surplus
6005	0.5-0.9	0.4-0.7	0.35	0.3	0.50	0.2	0.3	0.1	Surplus
6082	0.7-1.3	0.6-1.2	0.5	≤0.1	0.4-1.0	≤0.2	≤0.25	< 0.1	Surplus

ADODIZINMG QUALITY

Grade	corrosion resistance			abrasive resistance	
	CASS test		alkaline dropping test	sandtrial Abrasion coefficient f,g/um	
	hours	grade			
AA10	16	≥ 9	≥ 50		≥ 300
AA15	32	≥ 9	≥ 75		≥ 300
AA20	56	≥ 9	≥ 100		≥ 300
AA25	72	≥ 9	≥ 125		≥ 300

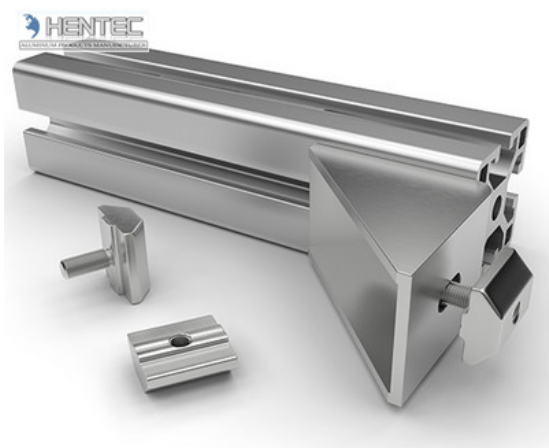


Introduction Of T-Slot Profile:

1. Material: 6063,6061,6060,etc.
2. Temper: T5 or T6
3. Finish: Mill finish, anodizing, powder coating, electrophoresis, wooden transfer or pvdf/carbon-flouride coated, polishing, brushing, sand blasting
4. Various colors: Silver, bronze, black, gold, blue,grey, champagne, bright, etc.
5. Machining: Cutting, punching, drilling, tapping, milling, bending, welding, CNC etc.
6. Various in styles and sizes:
 - A) Aluminum alloy bars: 6000 series, normal material such as 6063,6005,6061,6060, special materials such as 6082 etc.
 - B) Aluminum profiles:
 - General aluminum profiles (various shapes of pipes/tubes, angles, T or U shapes etc.)
 - Industrial aluminum profiles (TV frames, Rim for bicycles and motorcycles, Heat sink profiles, Furniture, Ladder, Guide Rail, Leisure materials, Shower Room, Solar Module Frame, Motor Shell, Pipeline Integration etc.)
 - Construction aluminum profiles
7. Certification: ISO9001,SGS,ROHS,TUV
8. Strong technical development ability, can provide high intensity and high ductility aluminum profiles, to meet customers' different requirements.
9. OEM service available, customized design available

Applications:

Industry Aluminum profile used in cars, trains machinery ,electronics, medical and other industrial filed . In terms of hardware, machinery, electromechanical parts, solar PV products, aluminum frames are adopt as important auxiliary materials. We also have aluminum profiles for radiators, fitness machinery, buildings, lighting instrument, windpipes, oil pipelines, for instance.



Specifications:

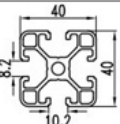
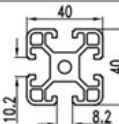
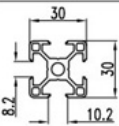
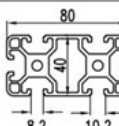
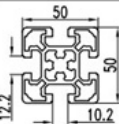
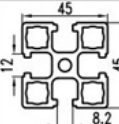
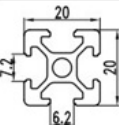
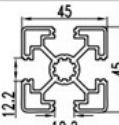
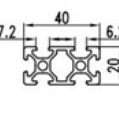
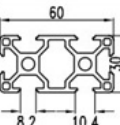
1. Primary Technical Data

1)Chemical composition

Alloy	Si	Fe	Cu	Mn	Mg	Cr	Zn	Ti	Impurity	Al
6063	0.2-0.6	0.35	0.1	0.1	0.45-0.9	0.1	0.1	0.1	0.15	Rest
6061	0.4-0.8	0.7	0.15-0.4	0.15	0.8-1.2	0.04-0.35	0.25	0.15	0.15	Rest
6060	0.3-0.6	0.1-0.3	0.1	0.1	0.35-0.6	-	0.15	0.1	0.15	Rest
6005	0.6-0.9	0.35	0.1	0.1	0.40-0.6	0.1	0.1	0.1	0.15	Rest

2)Mechanical property

Alloy	Temper	Tensile strength	Yield strength	Elongation
6063	T5	≥ 160Mpa	≥ 110Mpa	≥ 8%
	T6	≥ 205Mpa	≥ 180Mpa	≥ 8%
6061	T6	≥ 265Mpa	≥ 245Mpa	≥ 8%

公司图号	图 样	线密度 kg/m	公司图号	图 样	线密度 kg/m
HT-745		1.292	HT-752		1.646
HT-746		0.786	HT-753		2.952
HT-747		2.524	HT-754		2.015
HT-749		0.464	HT-767		1.522
HT-750		0.808			
HT-751		1.616			

Competitive Advantage:

- 1) Engineering design and support.
- 2) Aluminum profiles deeply processing:cutting,punching,drilling,milling,and fabricating.
- 3) High Quality system, strictly inspection during production and whole inspection before package.
- 4) Good performance, product warranty for 15 years.





+86-13861643436



aluminum@hentec.com.cn



aluminumextrusion-profiles.com

Qinfeng Road No.555 Huashi Town Jiangyin Jiangsu China (mainland) 214421