



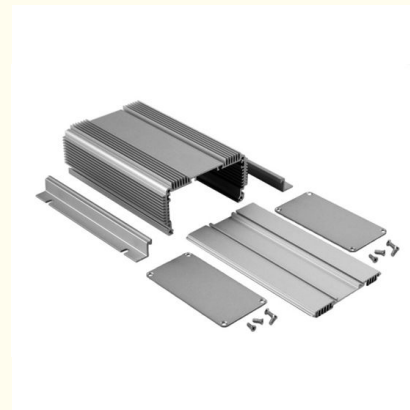
Colored Anodized T5 Extruded Aluminum Enclosure Audio Amplifier Housing Shell

Our Product Introduction

for more products please visit us on aluminumextrusion-profiles.com

Basic Information

- Place of Origin: China
- Brand Name: HT
- Minimum Order Quantity: 50KG
- Packaging Details: Inner plastic bag, into the metal drum, barrel, and net weight 50/250 KG; or packaging according to customer's requirements.



Product Specification

- Material: Aluminum
- Alloy: 6060 6061
- Temper: T5 T6
- Surface: Anodizing
- Color: Silvery , Black
- Logo: Printing
- Highlight: **T5 extruded aluminum enclosure,
T5 extruded aluminium enclosure,
6060 extruded aluminum enclosure**

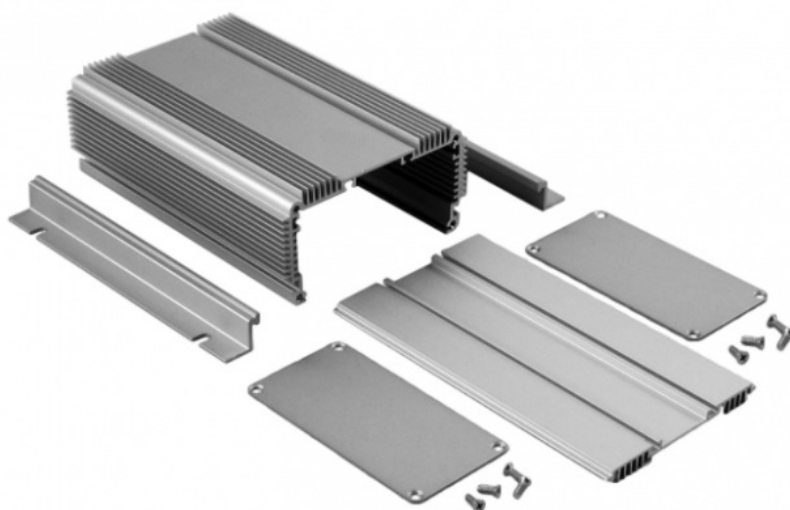


Product Description

Colored Anodizing Extruded Aluminum Enclosure / Aluminum Audio Amplifier Housing Shell

Description:

Size	Customized
Material	Main Box Aluminum Alloy 6063 + End Panel
Finish Treatment	Finish : Brush & Sandblast
	Anodizing: Silver, Champagne, Black, Gold, Blue , Gray , Red
	Spraying : White , Black , Blue , Yellow
Process Ability	Design , Drill , Punch , Line Cutting , Milling



Applications:

Industry Aluminum profile used in cars, trains machinery ,electronics, medical and other industrial filed . In terms of hardware, machinery, electromechanical parts, solar PV products, aluminum frames are adopt as important auxiliary materials. We also have aluminum profiles for radiators, fitness machinery, buildings, lighting instrument, windpipes, oil pipelines, for instance.

Specifications:

1.Primary Technical Data

1)Chemical composition

Alloy	Si	Fe	Cu	Mn	Mg	Cr	Zn	Ti	Impurity	Al
6063	0.2-0.6	0.35	0.1	0.1	0.45-0.9	0.1	0.1	0.1	0.15	Rest
6061	0.4-0.8	0.7	0.15-0.4	0.15	0.8-1.2	0.04-0.35	0.25	0.15	0.15	Rest
6060	0.3-0.6	0.1-0.3	0.1	0.1	0.35-0.6	-	0.15	0.1	0.15	Rest
6005	0.6-0.9	0.35	0.1	0.1	0.40-0.6	0.1	0.1	0.1	0.15	Rest

2)Mechanical property

Alloy	Temper	Tensile strength	Yield strength	Elongation
6063	T5	≥ 160Mpa	≥ 110Mpa	≥ 8%
	T6	≥ 205Mpa	≥ 180Mpa	≥ 8%
6061	T6	≥ 265Mpa	≥ 245Mpa	≥ 8%

2.Specifications:

Excellent material for smooth and subtle edges.
Elegant appearance.


Surface treatment: colorful anodized or electrostatic powder coated.
Suitable for constructions and other industrial purposes.
Customized surface finishes are welcome.


Competitive Advantage:

1. 15 years experience in providing ONE-STOP customized aluminium extrusion and doors&windows finish product solution;
- 14+ years of exporting to 46+ countries;
2. ISO: 9001:2008, TUV, RoHS, SGS, Reach, D&B
3. 100% new aluminum material
4. Competitive prices with short lead-time
5. Effective and strong technical support (40+ engineers) and excellent sales services (80+ sales representatives).
6. Sufficient production capacity:
 - 65 extruding lines with capacity 600tons to 7000tons;
 - 15 environment-friendly casting rod lines;
 - 8 lines of anodic oxidation and electrophoresis each;
 - 7 powder spraying lines;
 - 3fluorocarbon spraying line;
 - 18 heat-insulating lines;
 - 5 wood-grain line.



 **HENTEC** Hentec Industry Co.,Ltd

 +86-13861643436

 aluminum@hentec.com.cn

 aluminumextrusion-profiles.com

Qinfeng Road No.555 Huashi Town Jiangyin Jiangsu China (mainland) 214421