



## 6082 T5 Customized Exhibition Anodized Aluminum Profile Deep Processing

Our Product Introduction

for more products please visit us on [aluminumextrusion-profiles.com](http://aluminumextrusion-profiles.com)

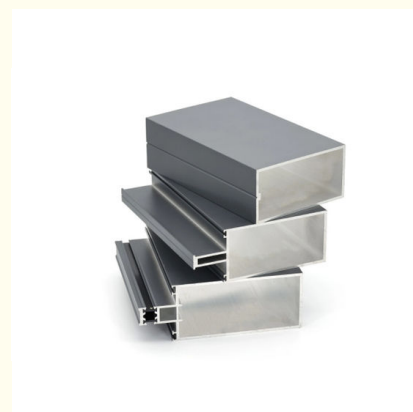
### Basic Information

- Place of Origin: China
- Brand Name: HENTEC
- Certification: SGS
- Minimum Order Quantity: 1 ton
- Packaging Details: Ep paper ,kraft ,pallet
- Delivery Time: 20days
- Payment Terms: T/T ,L/C
- Supply Ability: 100 000ton each month



### Product Specification

- Material: Aluminum
- Temper: T5 , T6
- Surface: Powder Painted / Anodize
- Name: Anodized Aluminum Profile
- Highlight: exhibition deep processing anodized aluminum profile  
, 6082 t5 anodized aluminum profile,  
6082 t5 anodised aluminium profile



## Product Description

### Customized Extruded Aluminum Profiles Using In Exhibition , Deep Processing

1. Material	Aluminium alloy; 6063, 6061, 6082, 6005, T5, T6,
2. Section Shapes	I, U, T, C, Z, L, H, square, round, flat, hollow, t-slot and other complicated shapes by custom design.
3. Surface treating	Mill/Anodized(oxidation)/Sand blast/Powder coating/Electrophoresis/Wood grain
4. Application	1) - for Window and door frames 3) - for Building curtain glass walls 4) - for Solar panel frames, Solar mounting / roofing brackets 5) - for Industry assembly lines equipment. 6) - for Heatsinks 7) - for LED lighting 8) - other by custom design size and dimension
5. Characteristic Services	1). OEM Service. 2). Design according to the customers' requirements. 3). more years' professional experience in research, manufacturing 4). Our modern deep processing center can provide machining such as Cutting, punching, drilling, etc.
6. Quality Control	We operate the most strict quality control system, the detection is from the material, production process, to final product, and ensure the product quality and traceability.
7. Process	Die design→Die making→Smelting&alloying→QC→Extruding→Cutting→QC→Surface treatment→QC→Welding→Packing→QC→Shipping→After Sale Service
8. Standard	GB5237-2008 equal to EN12020-1.2(2001)
9. Payment	T/T , L/C
10. Packaging Detail:	Inside : packed with plastic film to protect each piece Outside: Wrap to be bundles by waterproof craft paper or EPE film, Pallet or Wooden Case .
11. Lead Time	Die Developing and Sample testing: 5-7 days . Mass Production: 10-15days.

#### . Production Lines

Production Lines	Name	Qty	Max Product Length
Extruding Lines	600 ton extruder	5	
	800 ton extruder	2	
	1100 ton extruder	1	
	1250 ton extruder	1	
	1800 ton extruder	1	
	4500 ton extruder	2	
Surface Treatment Lines	Anodizing	1	≤6.5 m
	Powder coating	2	≤13 m
	Electrophoresis	1	≤6.5 m
Deep Processing Lines	Cutting machine	3	
	Punching machine	5	
	Milling machine	3	
	CNC machine	2	
	Polishing machine	1	
	Tapping machine	5	
	Riveting machine	1	

#### Applications:

Industry Aluminum profile used in cars, trains machinery ,electronics, medical and other industrial filed . In terms of hardware, machinery, electromechanical parts, solar PV products, aluminum frames are adopt as important auxiliary materials. We also have aluminum profiles for radiators, fitness machinery, buildings, lighting instrument, windpipes, oil pipelines, for instance.

#### Specifications:

##### 1.Primary Technical Data

###### 1)Chemical composition

Alloy	Si	Fe	Cu	Mn	Mg	Cr	Zn	Ti	Impurity	Al
6063	0.2-0.6	0.35	0.1	0.1	0.45-0.9	0.1	0.1	0.1	0.15	Rest
6061	0.4-0.8	0.7	0.15-0.4	0.15	0.8-1.2	0.04-0.35	0.25	0.15	0.15	Rest
6060	0.3-0.6	0.1-0.3	0.1	0.1	0.35-0.6	-	0.15	0.1	0.15	Rest
6005	0.6-0.9	0.35	0.1	0.1	0.40-0.6	0.1	0.1	0.1	0.15	Rest

###### 2)Mechanical property

Alloy	Temper	Tensile strength	Yield strength	Elongation
-------	--------	------------------	----------------	------------

6063	T5	≥ 160Mpa	≥ 110Mpa	≥ 8%
	T6	≥ 205Mpa	≥ 180Mpa	≥ 8%
6061	T6	≥ 265Mpa	≥ 245Mpa	≥ 8%

#### Competitive Advantage:

##### - WHO ARE WE

1. **Top Aluminium** profile manufacturer for 20 years in China.
2. **Diverse Products** used in the fields of construction, industry and deep-processing.

##### - WHY CHOOSE US

1. **Quality Control** is put in the core position of our production.
2. **Customized Production** shows our capability in product design and process control.
3. **Perfect Customer Services** include careful packaging, quick delivery and good after-sale service.

##### - WHERE DO WE EXPORT

1. **North America:** USA, Canada.
2. **South America:** Brazil, Argentina, Chile, etc.
3. **Europe:** Spain, France, Germany, The Netherlands, Russia, etc.
4. **Aisa and Oceania:** Vietnam, Thailand, India, Australia, etc.
5. **Total 53 countries.**



**HENTEC** Hentec Industry Co.,Ltd

+86-13861643436    aluminum@hentec.com.cn    aluminumextrusion-profiles.com

Qinfeng Road No.555 Huashi Town Jiangyin Jiangsu China (mainland) 214421