

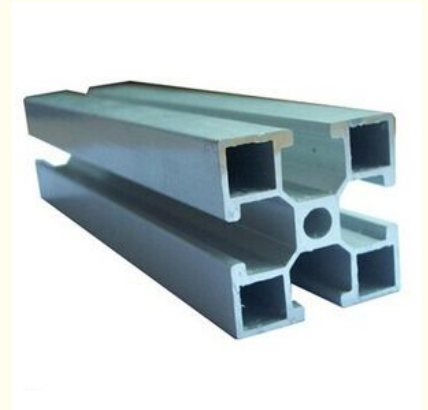


6005 , 6063 T5 Industrial Aluminium Profile / Assembly Line Profile

Our Product Introduction

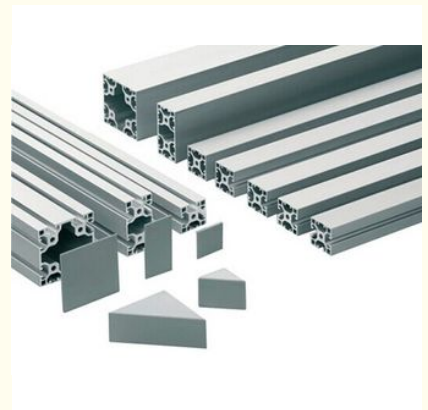
Basic Information

- Place of Origin: China
- Brand Name: HT
- Certification: CA ,CE ,ISO14001:2004, ISO9001:2000
- Model Number: HTL002
- Minimum Order Quantity: 1 ton
- Packaging Details: Ep paper ,kraft ,pallet
- Delivery Time: 20days
- Payment Terms: T/T ,L/C
- Supply Ability: 100 000ton each month



Product Specification

- Highlight: aluminum extrusion profiles ,
aluminium extruded profiles



for more products please visit us on aluminumextrusion-profiles.com

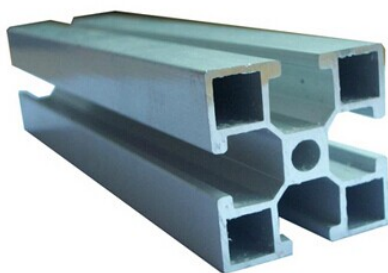
Product Description

6005 , 6063 T5 Industrial Aluminium Profile / Assembly Line Profile

- 1.Alloy :6063,6061,6005 or according to customer' s choice
- 2.Material:Aluminum
- 3.Surface Treatment: Mill Finished,Anodized ,Electrophoretic coated,Powder spray coated,Fluorocarbon powder spray coated /PVDF Paint, Drawbench,Steel polished,Wood grain coated /Wooden transfer .
- 4.Deep process: Milling, Drilling, Bending,Cutting.
- 5.Application:
Industry Aluminum profile used in cars, trains machinery ,electronics, medical and other industrial filed . In terms of hardware, machinery, electromechanical parts, solar PV products, aluminum frames are adopt as important auxiliary materials. We also have aluminum profiles for radiators, fitness machinery, buildings, lighting instrument, windpipes, oil pipelines, for instance.
- 6.Color:clear, satin, bronze, black, golden, silver, other multicolor
- 7.Temper: T4, T5, T6 ,T66

Description:

Item	Customized Aluminum Industrial Profile
Material	Alloy 6063, 6061,6005 or according to customer' s choice
Temper	T3, T4, T5, T6
Surface	Anodize (clear, satin, bronze, black, golden, silver, other multicolor) , electrophoresis, powder coating, PVDF coating, wood grain painting, etc.
MOQ	1 ton. Usually 12 tons for a 20 feet container; 24 tons for a 40 feet container.
Profile type	Industry Aluminum profile used in cars, trains machinery ,trailers ,electronics, medical and other industrial filed .
Machining	High-precision machining 1. milling; 2. Drilling; 3. Bending; 4. Cutting ...
Moulding	1. Using our moulds, free; 2. Using customer' s drawing, mould fee need to be paid .
Standard	Our Industrial Aluminium Profile Meet the China national standard GB/T5237-2004, GB/T6892-2000
FOB Port	Shanghai, etc.



Applications:

Industry Aluminum profile used in cars, trains machinery ,electronics, medical and other industrial filed . In terms of hardware, machinery, electromechanical parts, solar PV products, aluminum frames are adopt as important auxiliary materials. We also have aluminum profiles for radiators, fitness machinery, buildings, lighting instrument, windpipes, oil pipelines, for instance.

Specifications:

1.Primary Technical Data

1)Chemical composition

Alloy	Si	Fe	Cu	Mn	Mg	Cr	Zn	Ti	Impurity	Al
6063	0.2-0.6	0.35	0.1	0.1	0.45-0.9	0.1	0.1	0.1	0.15	Rest
6061	0.4-0.8	0.7	0.15-0.4	0.15	0.8-1.2	0.04-0.35	0.25	0.15	0.15	Rest
6060	0.3-0.6	0.1-0.3	0.1	0.1	0.35-0.6	-	0.15	0.1	0.15	Rest
6005	0.6-0.9	0.35	0.1	0.1	0.40-0.6	0.1	0.1	0.1	0.15	Rest

2)Mechanical property

Alloy	Temper	Tensile strength	Yield strength	Elongation
6063	T5	≥ 160Mpa	≥ 110Mpa	≥ 8%
	T6	≥ 205Mpa	≥ 180Mpa	≥ 8%
6061	T6	≥ 265Mpa	≥ 245Mpa	≥ 8%

公司图号	图 样	线密度 kg/m	公司图号	图 样	线密度 kg/m
HT-745		1.292	HT-752		1.646
HT-746		0.786	HT-753		2.952
HT-747		2.524	HT-754		2.015
HT-749		0.464	HT-767		1.522
HT-750		0.808			
HT-751		1.616			

Competitive Advantage:

- 1)Engineering design and support.
- 2)Aluminum profiles deeply processing:cutting,punching,drilling,milling,and fabricating.
- 3)High Quality system, strictly inspection during production and whole inspection before package.
- 4)Good performance, product warranty for 15 years.





+86-13861643436



aluminum@hentec.com.cn



aluminumextrusion-profiles.com

Qinfeng Road No.555 Huashi Town Jiangyin Jiangsu China (mainland) 214421