

Drawbench 6061 T6 Aluminium Profile System For Industry

Our Product Introduction

for more products please visit us on aluminumextrusion-profiles.com

Basic Information

- Place of Origin: China
- Brand Name: HENTEC
- Certification: CA ,CE ,ISO14001:2004, ISO9001:2000
- Minimum Order Quantity: 1 ton
- Packaging Details: Ep paper ,kraft ,pallet
- Delivery Time: 20days
- Payment Terms: T/T ,L/C
- Supply Ability: 100 000ton each month



Product Specification

- Product Name: Industrial Aluminium Profile
- Alloy: 6063
- Material: Aluminum
- Surface Treatment: Fluorocarbon Powder Spray Coated /PVDF Paint, Drawbench,Steel Polished
- Deep Process: Milling, Drilling, Bending,Cutting
- Temper: T4, T5, T6
- Highlight: **6061 T6 Aluminium Profile System, Drawbench Aluminium Profile System, Drawbench Industry Aluminium Profile**

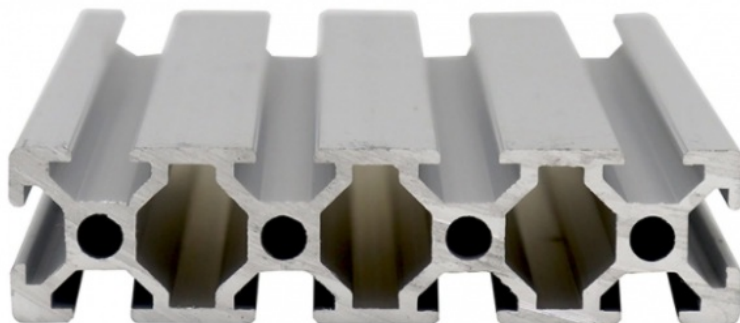


Product Description

6061- T6 Alu Profilsystem Assembly Production Line For Industry

We are professional one-stop factory for aluminum extrusion products. Our production capabilities include alloying , tooling manufacturing ,aluminum profiles extrusion , precision CNC machining, metal stamping, welding, finishing and assembly.

1. Description: Aluminum/Aluminium extrusion profile
2. Alloy temper: 6060;6063 ;6061;6082;6005
3. Standard: EN755, ASTM B221, DIN JIS Standard
4. Surface treatment: Mill finishes; anodized; Powder coated, wooden grain, polished, brushed.
5. Application: Construction; window; door; decoration; Architecture and Industrial etc.
6. Advantage:
1).Factory sell directly, convenient communication,professional technology,Top ranking machines.
2).Almost 18 years aluminum producing experience.
3).Higher R&D skills on Mould cutting, Extrusion processing, Surface treatment, Packing and Loading.
4).Strictly QC systems among the whole production line, we used 99.7% pure aluminum materials for processing.
5).24 Hours online service Patient and Professional, timely response.
6).Export from the biggest Port-Shanghai.
7).No smaller order extra cost
8).OEM service, personalized customization.



Description:

1. Description:6061-T6 Industrial Aluminium Profile System Assembly Production Line for Industry
2. Alloy temper: 6060/6063-T6/T5;
3. Standard: EN755, ASTM B221, DIN Standard
4. Surface treatment: Mill finishes; Anodized; Powder coated, wooden grain, polished, brushed.
5. Application: Assembly Production Line
6. Advantage:
 - 1) Pure 99.7% aluminum materials without any scrap used
 - 2) OEM welcome, we can design and cut die to meet customer's special demand
 - 3) Wonderful surface treatment, we can meet customers required on surface
 - 4) Strictly quality control process assured higher quality.
 - 5) Packing safety and convenient.

Applications:

Industry Aluminum profile used in cars, trains machinery ,electronics, medical and other industrial filed . In terms of hardware, machinery, electromechanical parts, solar PV products, aluminum frames are adopt as important auxiliary materials. We also have aluminum profiles for radiators, fitness machinery, buildings, lighting instrument, windpipes, oil pipelines, for instance.



Specifications:

1.Primary Technical Data

1)Chemical composition

Alloy	Si	Fe	Cu	Mn	Mg	Cr	Zn	Ti	Impurity	Al
6063	0.2-0.6	0.35	0.1	0.1	0.45-0.9	0.1	0.1	0.1	0.15	Rest
6061	0.4-0.8	0.7	0.15-0.4	0.15	0.8-1.2	0.04-0.35	0.25	0.15	0.15	Rest
6060	0.3-0.6	0.1-0.3	0.1	0.1	0.35-0.6	-	0.15	0.1	0.15	Rest
6005	0.6-0.9	0.35	0.1	0.1	0.40-0.6	0.1	0.1	0.1	0.15	Rest

2)Mechanical property

Alloy	Temper	Tensile strength	Yield strength	Elongation
6063	T5	≥ 160Mpa	≥ 110Mpa	≥ 8%
	T6	≥ 205Mpa	≥ 180Mpa	≥ 8%
6061	T6	≥ 265Mpa	≥ 245Mpa	≥ 8%

公司图号	横 图	线密度 kg/m
HT-745		1.292
HT-746		0.786
HT-747		2.524
HT-749		0.464
HT-750		0.808
HT-751		1.616

公司图号	横 图	线密度 kg/m
HT-752		1.646
HT-753		2.952
HT-754		2.015
HT-767		1.522

 **HENTEC** Hentec Industry Co.,Ltd

 +86-13861643436

 aluminum@hentec.com.cn

 aluminumextrusion-profiles.com

Qinfeng Road No.555 Huashi Town Jiangyin Jiangsu China (mainland) 214421