

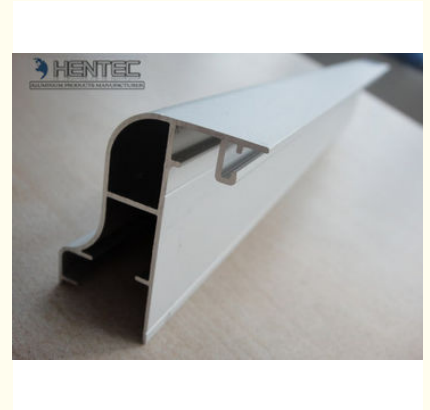


## Sand Blast Aluminum Window Extrusion Profiles , aluminium window frames

Our Product Introduction

### Basic Information

- Place of Origin: China
- Brand Name: HT
- Certification: CA ,CE
- Model Number: HD50
- Minimum Order Quantity: 1 ton
- Packaging Details: EP Paper ,kraft and pallet
- Delivery Time: 20days
- Payment Terms: T/T or L/C
- Supply Ability: 100 000 ton each month



### Product Specification

- Highlight: **aluminum extrusion profiles ,  
extruded aluminium profiles**

for more products please visit us on [aluminumextrusion-profiles.com](http://aluminumextrusion-profiles.com)

## Product Description

### Sand Blast Aluminum Window Extrusion Profiles , aluminium window frames

Temper: T4, T5, T6 ,T66

Deep process: Milling, Drilling, Bending,Cutting.

Alloy :6063,6061,6005 or according to customer' s choice

Material:Aluminum

Color:clear, satin, bronze, black, golden, silver, other multicolor

#### Description:

#### The surface treatment :

- 1) Mill Finished
- 2) Anodized: Silver, champagne, light bronze, dark bronze, black, light titanium, dark titanium. Usually the thickness of the film is 10 um.
- 3) Electrophoretic coated: Silver, champagne, bronze, black, light bronze, dark bronze.
- 4) Powder spray coated: Normal color, special color. Thicknes: 60 to 80 um.
- 5) Fluorocarbon powder spray coated /PVDF Pain: Normal color, special color.
- 6) Drawbench
- 7) Steel polished
- 8) Wood grain coated /Wooden transfer: Imported paper, domestic paper.

#### Technical requirements

- 1) Standard: GB/75237-2004, Q/320281/PDWD-2008
- 2) Certification: ISO9001
- 3) OEM service offered
- 4) Material: Alloy 6063, 6061 or according to customer' s choice  
Temper: T3, T4, T5, T6
- 5) Fabrication: 1. Milling; 2. Drilling; 3. Bending; 4. Cutting...
- 6) Window Accessories: Using ECO friendly EPDM leather strap that would not age for a long time with a long service life.
- 7) MOQ: 1 ton. Usually 12 tons for a 20 feet container; 24 tons for a 40 feet container.
- 8) FOB Port: Shanghai Port

#### Applications

Used in casement doors and windows for living room, dinner room, bathroom, office room, meeting room, restaurant, hotel,etc.

#### Specifications:

##### 1.Primary Technical Data

1)Chemical composition

Alloy	Si	Fe	Cu	Mn	Mg	Cr	Zn	Ti	Impurity	Al
6063	0.2-0.6	0.35	0.1	0.1	0.45-0.9	0.1	0.1	0.1	0.15	Rest
6061	0.4-0.8	0.7	0.15-0.4	0.15	0.8-1.2	0.04-0.35	0.25	0.15	0.15	Rest
6060	0.3-0.6	0.1-0.3	0.1	0.1	0.35-0.6	-	0.15	0.1	0.15	Rest
6005	0.6-0.9	0.35	0.1	0.1	0.40-0.6	0.1	0.1	0.1	0.15	Rest

2)Mechanical property

Alloy	Temper	Tensile strength	Yield strength	Elongation
6063	T5	≥ 160Mpa	≥ 110Mpa	≥ 8%
	T6	≥ 205Mpa	≥ 180Mpa	≥ 8%
6061	T6	≥ 265Mpa	≥ 245Mpa	≥ 8%

##### 2. Specifications :

型号名称	简图	T (mm)	线密度 kg/m	型号名称	简图	T (mm)	线密度 kg/m
PC5010 外框		1.4	0.648	PC5012DN2 加强中框		2.0	1.733
		2.0	0.803			1.4	1.181
PC5011 外框		1.4	0.548	PC5013N 横中框		2.0	1.432
		2.0	0.703			2.0	1.806
PC5011N3 外框 角码: L0720		1.4	0.783	PC5013DN1 加强中框		2.0	1.806
PC5012 中框		1.4	0.912	PC5014 中悬臂盖板 角码: PC5037		1.4	1.116
		2.0	1.163			1.4	0.806
PC5012N 横中框		1.4	1.112	PC5020 窗扇 角码: 1.4配PC5035 2.0配PC5036		2.0	1.087
		2.0	1.363			1.5	1.101
PC5012N1 加强中框		1.4	1.163	PC5021 门扇 角码: L0730		2.0	1.287

#### Competitive Advantage:

- 1) Engineering design and support.
- 2) Aluminium profiles deeply processing: cutting, punching, drilling, milling, and fabricating.
- 3) High Quality system, strictly inspection during production and whole inspection before package.
- 4) Good performance, product warranty for 15 years.



