

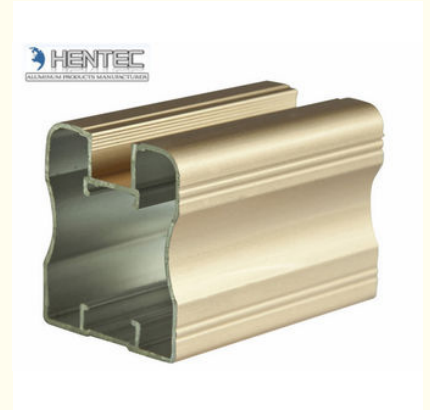


Bronze Anodized Aluminum Window Extrusion Profiles , With Finished Mchining

Our Product Introduction

Basic Information

- Place of Origin: China
- Brand Name: Hentec
- Certification: CA ,CE
- Model Number: H8546
- Minimum Order Quantity: 1 ton
- Packaging Details: EP Paper ,kraft and pallet
- Delivery Time: 20days
- Payment Terms: T/T or L/C
- Supply Ability: 100 000 ton each month



Product Specification

- Material: Aluminum Alloy
- Temper: T5
- Alloy: 6063
- Surface: Powder Painting
- Standard: GB/75237-2004, Q/320281/PDWD-2008
- Highlight: **extruded aluminium profiles,
profile aluminum extrusions**

for more products please visit us on aluminumextrusion-profiles.com

Product Description

Bronze Anodized Aluminum Window Extrusion Profiles , With Finished Mchining

The surface treatment :

- 1) Mill Finished
- 2) Anodized: Silver, champagne, light bronze, dark bronze, black, light titanium, dark titanium. Usually the thickness of the film is 10 um.
- 3) Electrophoretic coated: Silver, champagne, bronze, black, light bronze, dark bronze.
- 4) Powder spray coated: Normal color, special color. Thicknes: 60 to 80 um.
- 5) Fluorocarbon powder spray coated /PVDF Pain: Normal color, special color.
- 6) Drawbench
- 7) Steel polished
- 8) Wood grain coated /Wooden transfer: Imported paper, domestic paper.

Technical requirements

- 1) Standard: GB/75237-2004, Q/320281/PDWD-2008
- 2) Certification: ISO9001
- 3) OEM service offered
- 4) Material: Alloy 6063, 6061 or according to customer' s choice
Temper: T3, T4, T5, T6
- 5) Fabrication: 1. Milling; 2. Drilling; 3. Bending; 4. Cutting...
- 6) Window Accessories: Using ECO friendly EPDM leather strap that would not age for a long time with a long service life.
- 7) MOQ: 1 ton. Usually 12 tons for a 20 feet container; 24 tons for a 40 feet container.
- 8) FOB Port: Shanghai Port

Applications

Aluminum extrusion profiles we supply: For windows ,doors ,fence , screen,Louwer, Curtain Wall,handrail,partition ,sunroom ,wardrobe, solar panel frames, exhibit shelf profile, LED Frames, production facility etc.

Specifications:

1.Primary Technical Data

1)Chemical composition

Alloy	Si	Fe	Cu	Mn	Mg	Cr	Zn	Ti	Impurity	Al
6063	0.2-0.6	0.35	0.1	0.1	0.45-0.9	0.1	0.1	0.1	0.15	Rest
6061	0.4-0.8	0.7	0.15-0.4	0.15	0.8-1.2	0.04-0.35	0.25	0.15	0.15	Rest
6060	0.3-0.6	0.1-0.3	0.1	0.1	0.35-0.6	-	0.15	0.1	0.15	Rest
6005	0.6-0.9	0.35	0.1	0.1	0.40-0.6	0.1	0.1	0.1	0.15	Rest

2)Mechanical property

Alloy	Temper	Tensile strength	Yield strength	Elongation
6063	T5	≥ 160Mpa	≥ 110Mpa	≥ 8%
	T6	≥ 205Mpa	≥ 180Mpa	≥ 8%
6061	T6	≥ 265Mpa	≥ 245Mpa	≥ 8%

2. Specifications :

型号名称	简图	T (mm)	线密度 kg/m	型号名称	简图	T (mm)	线密度 kg/m
PC5010 外框		1.4	0.648	PC5012DN2 加强中框		2.0	1.733
		2.0	0.803			2.0	1.432
PC5011 外框		1.4	0.548	PC5013N 横中框		1.4	1.181
		2.0	0.703			2.0	1.806
PC5011N3 外框 角码:L0720		1.4	0.783	PC5013DN1 加强中框		2.0	1.806
PC5012 中框		1.4	0.912	PC5014 中悬臂盖板 角码:PC5037		1.4	1.116
		2.0	1.163			2.0	1.087
PC5012N 横中框		1.4	1.112	PC5020 臂扇 角码: 1.4配PC5035 2.0配PC5036		1.4	0.806
		2.0	1.363			2.0	1.287
PC5012N1 加强中框		1.4	1.163	PC5021 门扇 角码:L0730		1.5	1.101
						2.0	1.287

Competitive Advantage:

Our Advantages:

1. Offer OEM service.
2. Surface Treatment: Mill finished, wooden finished, Anodized, Powder coated, Printed, Polished.
3. Our Extrusion Machine are available to produce the thinnest of aluminium profile is 0.3 mm.
4. Color Choice: any color you want for powder coated, but for anodized we have five normal color for your choice: Matte silver, Silver, Bronze, Dark, Champagne.
5. Stable delivery time.



Hentec Industry Co.,Ltd



 **HENTEC** Hentec Industry Co.,Ltd

 +86-13861643436  aluminum@hentec.com.cn  aluminumextrusion-profiles.com

Qinfeng Road No.555 Huashi Town Jiangyin Jiangsu China (mainland) 214421