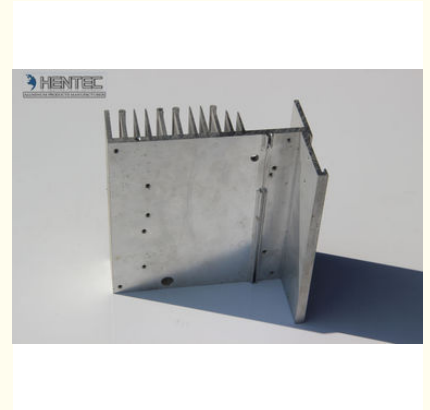




Customized CNC Machining Aluminium Extrusion Profiles Mill Finished

Basic Information

- Place of Origin: China
- Brand Name: HT
- Certification: CA ,CE
- Model Number: KTH-007
- Minimum Order Quantity: 1 ton
- Packaging Details: Ep paper ,kraft ,pallet
- Delivery Time: 20days
- Payment Terms: T/T ,L/C
- Supply Ability: 100 000ton each month



Product Specification

- Product Name: Aluminum Heatsink Extrusion Profiles
- Alloy: 6063,6061,6005
- Material: Aluminum
- Surface Treatment: Mill Finished,Anodized ,Electrophoretic Coated,Powder Spray Coated
- Deep Process: Milling, Drilling, Bending,Cutting
- Temper: T4, T5, T6 ,T66
- Highlight: **heatsink extrusion profiles, aluminium heatsink extrusion**

Product Description

Detailed Product Description

Product Name:	Aluminum Heat Sink	Application:	Machine
Shape:	Irregular	Alloy:	6061
Temper:	T5, T6	Film Thickness:	10-20 Um
Standard:	ROHS	Surface:	Mill Finished

Description:

Item	Customized CNC machining Aluminum Heatsink Extrusion Profiles
Surface Treatment	Polishing, Powder coating, Spraying, Anodising, Zinc Plating and etc
Tolerance	+/-0.02~0.05mm
Equipments	a) CNC Machining Center b) Extrusion Mchine c) CNC Milling Machines d) Punching Machines e) Precision Cutting Machines f) Argon Welding Machines g) NC Bending Machine h) Anodized /Powder painted line
Preferred Formats	JPEG, PDF,CAD,IGS,STP
Preferred Industries	a) Communication Equipments b) Medical Equipments c) House Hardware d) Toy Air soft e) Mechanical Equipments f) Other customized Parts

Applications:

Aluminum heat sink is widely used on Machines , cars , lighter ...

Specifications:

1. Primary Technical Data

1)Chemical composition

Alloy	Si	Fe	Cu	Mn	Mg	Cr	Zn	Ti	Impurity	Al
6063	0.2-0.6	0.35	0.1	0.1	0.45-0.9	0.1	0.1	0.1	0.15	Rest
6061	0.4-0.8	0.7	0.15-0.4	0.15	0.8-1.2	0.04-0.35	0.25	0.15	0.15	Rest
6060	0.3-0.6	0.1-0.3	0.1	0.1	0.35-0.6	-	0.15	0.1	0.15	Rest
6005	0.6-0.9	0.35	0.1	0.1	0.40-0.6	0.1	0.1	0.1	0.15	Rest

2) Mechanical property

Alloy	Temper	Tensile strength	Yield strength	Elongation
6063	T5	≥ 160Mpa	≥ 110Mpa	≥ 8%
	T6	≥ 205Mpa	≥ 180Mpa	≥ 8%
6061	T6	≥ 265Mpa	≥ 245Mpa	≥ 8%




Competitive Advantage:

1. Enforcing strict quality that meet ISO 9001:2008 requirements
2. Superior design capabilities and manufacturing techniques
3. Maintaining control of internal systems and processes
4. Providing a safe and efficient working environment by adhering to safety procedures
5. Offering flexibility to meet each individual customers needs



 **HENTEC** Hentec Industry Co.,Ltd

 +86-13861643436

 aluminum@hentec.com.cn

 aluminumextrusion-profiles.com

Qinfeng Road No.555 Huashi Town Jiangyin Jiangsu China (mainland) 214421