



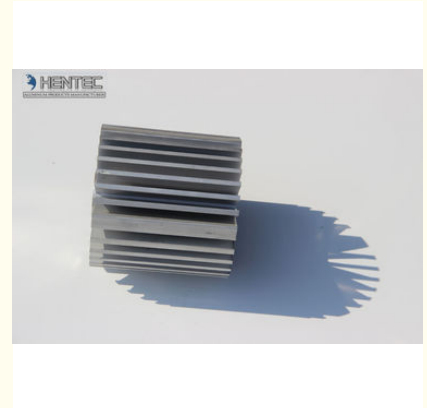
## Circular Aluminium Extrusion Profiles Anodized Environmentally Friendly

### Our Product Introduction

for more products please visit us on [aluminumextrusion-profiles.com](http://aluminumextrusion-profiles.com)

#### Basic Information

- Place of Origin: China
- Brand Name: HT
- Certification: CA ,CE
- Model Number: KTH-007
- Minimum Order Quantity: 1 ton
- Packaging Details: Ep paper ,kraft ,pallet
- Delivery Time: 25days
- Payment Terms: T/T ,L/C
- Supply Ability: 100 000ton each month



#### Product Specification

- Product Name: Aluminum Heatsink Extrusion Profiles
- Alloy: 6063,6061,6005
- Material: Aluminum
- Surface Treatment: Mill Finished,Anodized ,Electrophoretic Coated,Powder Spray Coated
- Deep Process: Milling, Drilling, Bending,Cutting
- Temper: T4, T5, T6 ,T66
- Highlight: **heatsink extrusion profiles, aluminium heatsink extrusion**

## Product Description

### Description:

Hentec Industry is dedicated to the development, manufacture and marketing of high-performance aluminum extrusion profiles. We pride ourselves on rapid sampling, flexible production methodologies and world-class technical support to our customers. We have significant experience in the thermal management arena and look forward to working with our customers, wherever they are in the world, and however demanding their needs are. And now, our products have been sold in more than 1000 global customers.

Item	Environmentally Friendly Circular Aluminum Heatsink Extruded Profile , Anodized
Characteristics of mechanics	1, Tensile strength: $\geq 205$ N/mm <sup>2</sup>
	2, Yield strength: $\geq 110$ Mpa
	3, Hardness(HW): $\geq 8$
Appearance	1, No obvious Crack, Scratch , Peeling, Corrosion and air bubble
	2, Hang mark is accepted at two end of the profiles, but should less than 10mm
Application	1, Architecture: Windows and Doors, Curtain Walls, Shutter, Louver, Barrier, Fence, Ceiling, Handrail, balustrades, showcase, Partition
	2, Industrial: tube, pipe, LED strip, heat-sink, motor housing, fins, tent, solar, Vehicle beam, TV Frame
	3, Furniture: Chair, Wardrobe, Cabinet, Ladder, Closet, Tile Trim
Products Feature	1, Environmentally Friendly, Elegant appearance
	2, Corrosion-Resistant, Abrasion Resistant, High Weather Resistant
	3, Air-Proof, Water-Proof, Anti-Aging, Durable, Shining

### Applications:

Aluminum heat sink is widely used on Machines , cars , lighter ...

### Specifications:

#### 1. Primary Technical Data

##### 1)Chemical composition

Alloy	Si	Fe	Cu	Mn	Mg	Cr	Zn	Ti	Impurity	Al
6063	0.2-0.6	0.35	0.1	0.1	0.45-0.9	0.1	0.1	0.1	0.15	Rest
6061	0.4-0.8	0.7	0.15-0.4	0.15	0.8-1.2	0.04-0.35	0.25	0.15	0.15	Rest
6060	0.3-0.6	0.1-0.3	0.1	0.1	0.35-0.6	-	0.15	0.1	0.15	Rest
6005	0.6-0.9	0.35	0.1	0.1	0.40-0.6	0.1	0.1	0.1	0.15	Rest

##### 2) Mechanical property

Alloy	Temper	Tensile strength	Yield strength	Elongation
6063	T5	$\geq 160$ Mpa	$\geq 110$ Mpa	$\geq 8\%$
	T6	$\geq 205$ Mpa	$\geq 180$ Mpa	$\geq 8\%$
6061	T6	$\geq 265$ Mpa	$\geq 245$ Mpa	$\geq 8\%$



Hentec Industry Co.,Ltd

**Competitive Advantage:**

We can offer professional Manufacturing and exporting service, OEM/ODM for Metal & Plastic parts in China. All the parts manufactured by CNC Lathe & Milling Machine Center.



**HENTEC** Hentec Industry Co.,Ltd

+86-13861643436

aluminum@hentec.com.cn

aluminumextrusion-profiles.com

Qinfeng Road No.555 Huashi Town Jiangyin Jiangsu China (mainland) 214421