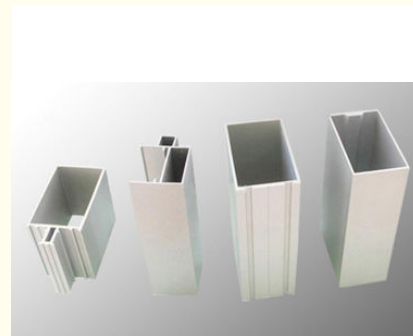


Silvery Anodizing Aluminum Driver Cover Extruded Enclosures For Electronics

Our Product Introduction

Basic Information

- Place of Origin: China
- Brand Name: HENTEC
- Minimum Order Quantity: 50KG
- Packaging Details: In sealed double plastic bags of 5-30 KG net, then packed in metal pails.



Product Specification

- Material: Aluminium
- Surface: Anodizing
- Color: Silvery
- Usage: Electrical Cover
- Logo Printing: Silk-screen
- Machininga: Cutting ,drilling
- Highlight: **aluminum electrical enclosures,
extruded aluminum enclosure boxes**

for more products please visit us on aluminumextrusion-profiles.com

Product Description

Silvery Anodizing Aluminum Electrical Shell , Aluminum Driver Cover

Hentec Industrial Co.,Ltd is professional serves for Building doors and windows profiles, Railway, Cars with aluminum, IT computer , Communications, Electrical, Mechanical, High-speed rail transportation, Refrigerated containers etc., special aluminum profiles for 17 years.

1	Business type:	Real Big Manufacturer & Exporter with 17years experience
2	Production Standard:	Architecture Profile : GB 5237-2008 Industry Profile : GB/T6892-2008
3	Main products	Aluminum extrusion profiles for architectural & industrial,Different aluminum profile sections for different applications . Aluminum Formwork for Building Construction.
4	Manufacture Process	1. Mould /Tooling analysis, design & manufacturing 2. Mould /Tooling testing & confirm the sample 3. Die-casting rough parts 4. Precision machining: CNC lathes, milling, drilling, grinding etc 5. Surface treatment: Trimming, polishing, cleaning, passivation & power coating and other requirement from Customer 6. Full Inspection 7. Packing
5	Price:	Aluminium Ingot price +different finishes processing Fee + local cost
6	Payment term:	T/T, L/C at sight
7	Specification:	A. Alloy: 6063, 6060, 6061, 6005 etc B. State: T5/T6 C. Length: 1m-13 m (polishing : 2.5 m) D. Normal Anodizing thickness: 8-12 micro E. Normal powder coating thickness: 60-100 micro F. Tensile strength: ≥ 16 mpa G. Yield strength: ≥ 110 mpa H. Extensibility: $\geq 8\%$ I. Hardness(HW): ≥ 8
8	Packing:	Kraft paper, EPE Fram, Shrink film, Carton Box,Wooden box etc,Customized package is available.
9	MOQ:	1X20 FCL ,Each profile not less than 500 kgs. Each color not less than 2 tons.
10	Sample time	10-15 days after drawing confirmed and mold cost paid.
11	Delivery time:	35 days after deposit received.
12	Port	Shanghai Port

Surface treatment	
Power Coating Profile	As an environment-friendly high quality solvent-free decoration material,our power coated aluminium profile is characterized by excellent corrosion resistance,superior mechanical properties,impact resistance and fine flexibility,uncomparable by ordinary aluminum products,resistant to ultraviolet light,free from fading and influence from harsh weather,and lasting color and gloss
Wood Grain Profile	As a leading environment-friendly domestic building aluminium product,the wood-grain aluminium product contributes to modern home decoration.With all the advantages of centralized coated aluminium products,it has wood-like visual effects.It outweighs the wood products in terms of fireproof and thermal insulation and corrosion resistance.
Thermal-Break Profile	With sealed thermal and cold insulation performance,the thermal break aluminium product can significantly reduce energy consumption,in compliance with the requirements of the national energy-saving decree .It also has good characteristics to resist the erosion caused by harmful.
PVDF Profile	Our fluorocarbon coated aluminium profile is characterized by the smooth surface,uniform color,strongly resistant from high acid,alkali,impact and abrasion.It can withstand long-term strong ultraviolet radiation and acid erosion,free from coating chalking,fading and shedding.

Order,payment,terms,shipment

- 1, Minimum order: 500kg per trial order 1 piece of sample free of charge provided by approval and kept for future mass production.
- 2, Sample Lead Time: 25 working days(15 days for making the tool and 10 days making the samples. Before sending the samples to customer, samples should pass strict test in our lab.)Production Lead time: it depends on customers' order quantity (30 working days after deposit).
- 3, Payment: (Can negotiate with customers, our usual practices are as follow)
- 4, Tooling:100% prepaid by T/T.

5. Parts:30% upon order confirmation and balance before delivery by T/T

Applications:

Aluminum profile used in cars, trains machinery ,electronics, medical and other industrial filed . In terms of hardware, machinery, electromechanical parts, solar PV products, aluminum frames are adopt as important auxiliary materials. We also have aluminum profiles for radiators, fitness machinery, buildings, lighting instrument, windpipes, oil pipelines, for instance.

Advantage :

- 1.Adopt 99.7% aluminum ingots as raw material.
- 2.Resonable price and good quality.
- 3.Payment terms:T/T,L/C
- 4.Terms for Delivery:Ex-work,FOB,CIF
- 5.Samples of aluminum profile sent within 10 days
- 6.Lead time is 15-20 days.
7. Aluminum Profile Monthly production capability is 4000 tons.



HENTEC Hentec Industry Co.,Ltd

+86-13861643436

aluminum@hentec.com.cn

aluminumextrusion-profiles.com

Qinfeng Road No.555 Huashi Town Jiangyin Jiangsu China (mainland) 214421