

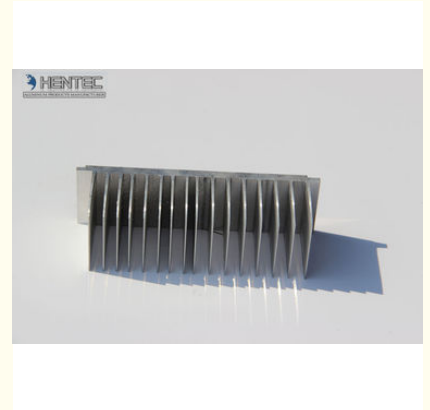


## Custom High Power LED Aluminum Heatsink Extrusion Profiles Professional

Our Product Introduction

### Basic Information

- Place of Origin: China
- Brand Name: HT
- Certification: CA ,CE
- Minimum Order Quantity: 1 ton
- Packaging Details: Ep paper ,kraft ,pallet
- Delivery Time: 20days
- Payment Terms: T/T ,L/C
- Supply Ability: 100 000ton each month



### Product Specification

- Product Name: Aluminum Heatsink Extrusion Profiles
- Alloy: 6063,6061,6005
- Material: Aluminum
- Surface Treatment: Mill Finished,Anodized ,Electrophoretic Coated,Powder Spray Coated
- Deep Process: Milling, Drilling, Bending,Cutting
- Temper: T4, T5, T6 ,T66
- Highlight: **heatsink extrusion profiles,**  
**aluminium extrusion heat sink profiles**

for more products please visit us on [aluminumextrusion-profiles.com](http://aluminumextrusion-profiles.com)

## Product Description

### Description:

#### Custom High Power LED Aluminum Heatsink Extrusion Profiles 6063 , 6061 , 6060

Hentec Industry is dedicated to the development, manufacture and marketing of high-performance aluminum extrusion profiles . We pride ourselves on rapid sampling, flexible production methodologies and world-class technical support to our customers. We have significant experience in the thermal management arena and look forward to working with our customers, wherever they are in the world, and however demanding their needs are. And now, our products have been sold in more than 1000 global customers.

1. Material: 6063,6061,6060,6005,6005A,etc.
2. Temper: T5 or T6
3. Finish: Mill finish, anodizing,powder coating, electrophoresis, wooden transfer or pvdf/carbon-flouride coated, polishing,brushing,sand blasting
4. Various colors: Silver,bronze,black,gold,blue,grey,champagne,bright,etc.
5. Machining: Cutting,punching,drilling,tapping,milling,bending,welding,CNC etc.
6. Various in styles and sizes:
  - A). **Aluminum alloy bars:** Normal material such as 6063,6005,6061,6060, special materials such as 6082 etc.
  - B). **Aluminum profiles:**
    - General aluminum profiles** (various shapes of pipes/tubes, angles, T or U shapes etc.)
    - **Industrial aluminum profiles** ( TV frames, Rim for bicycles and motorcycles, Heat sink profiles, Furniture, Ladder, Guide Rail, Leisure materials, Shower Room, Solar Module Frame, Motor Shell, Pipeline Integration etc.)
    - **Construction aluminum profiles**
7. Certification: ISO9001,SGS,ROHS,TUV
8. Strong technical development ability, can provide high intensity and high ductility aluminum profiles, to meet customers' different requirements.
9. OEM service available, customized design available

### Applications:

Aluminum heat sink is widely used on Machines , cars , lighter ...

### Specifications:

#### 1. Primary Technical Data

##### 1)Chemical composition

Alloy	Si	Fe	Cu	Mn	Mg	Cr	Zn	Ti	Impurity	Al
6063	0.2-0.6	0.35	0.1	0.1	0.45-0.9	0.1	0.1	0.1	0.15	Rest
6061	0.4-0.8	0.7	0.15-0.4	0.15	0.8-1.2	0.04-0.35	0.25	0.15	0.15	Rest
6060	0.3-0.6	0.1-0.3	0.1	0.1	0.35-0.6	-	0.15	0.1	0.15	Rest
6005	0.6-0.9	0.35	0.1	0.1	0.40-0.6	0.1	0.1	0.1	0.15	Rest

##### 2) Mechanical property

Alloy	Temper	Tensile strength	Yield strength	Elongation
6063	T5	≥ 160Mpa	≥ 110Mpa	≥ 8%
	T6	≥ 205Mpa	≥ 180Mpa	≥ 8%
6061	T6	≥ 265Mpa	≥ 245Mpa	≥ 8%



**Competitive Advantage:**

- 1, We can do the designs according to the customers' requirement
- 2, We can open customers' own die as per their requirement
- 3, We can offer you the high quality products & reasonable price
- 4, We can offer you a good after-sell service
- 5, We have strong professional design team
- 6, Prompt delivery, sample order is welcome.



Tag :  
**extruded aluminum heat sink**  
**aluminum heatsink extrusion profiles**

 **HENTEC** Hentec Industry Co.,Ltd

 +86-13861643436  [aluminum@hentec.com.cn](mailto:aluminum@hentec.com.cn)  [aluminumextrusion-profiles.com](http://aluminumextrusion-profiles.com)

Qinfeng Road No.555 Huashi Town Jiangyin Jiangsu China (mainland) 214421