



Four Way Entry Pallet Aluminium Window Profiles Stronger Cleaner Recyclable

Our Product Introduction

Basic Information

- Place of Origin: China
- Brand Name: Hentec
- Certification: SGS
- Minimum Order Quantity: 1 ton
- Packaging Details: Ep paper ,kraft ,pallet
- Delivery Time: 20days
- Payment Terms: T/T ,L/C
- Supply Ability: 100 000ton each month



Product Specification

- Product Name: Industrial Aluminium Profile
- Alloy: 6063,6061,6005
- Material: Aluminum
- Surface Treatment: Mill Finished,Anodized ,Electrophoretic Coated,Powder Spray Coated
- Deep Process: Milling, Drilling, Bending,Cutting
- Temper: T4, T5, T6 ,T66
- Highlight: **aluminum extrusion profiles, aluminium door frame**

for more products please visit us on aluminumextrusion-profiles.com

Product Description

Description:

We are Hentec Industry Co.,Ltd, which specializes in the manufacturing of various aluminum alloys series products in the forms of tubes, pipes, bars, etc. These products can be used for pallets, decorations, windows and doors, and transport tools, etc.

Item	Anodized Industrial Aluminum Profile ,Aluminum four way entry pallet with Stronger , Cleaner, Recyclable
Alloy	6061,6060,6063,6005 etc
Temper	T4, T5, T6
Surface	Oxidation coloring,Powder coating, Anodizing(clear, satin, bronze, black, golden, silver, other multicolor), Electrophoresis,PVDF coating, Mill finish, polished, color coated,Wire drawing,Wood grain,etc
Type	2-way lightweight slatted pallet , interlocking 4-way block pallet , Fully Nestable 4-way entry with standard deck pallet , 2-way heavy duty channel pallet , fully nestable pallet ...
Technology Supports	1, Engineering design 2, AutoCAD, pro/e ,UG drawing
Standard	Meet the China national standard and Europe standard and American standard.
Extrusion Tolerance	GB/T5237-2000 (Chinese Standard)
Machining Tolerance	GB/T 1804-92
Standard for Anodizing	GB5237.2-2004
Manufacturing Process	Die designing→ Die making→ Smelting& alloying→ Extruding→ Cutting→ CNC machining→ Drilling→ Tapping→ Surface treatment→ Welding→ Assembling→ Packing
Packing method	1. Standard packing: Eachprofile will be wrapped in the EPE sheet in order to protect the profiles' surfaces, kraft paper wrapped in bundles. 2. Special packing: wooden cases+iron trays. 3. Bundles or boxes with wooden bars 4. EPE+carton boxes. 5. Customized packing methods are welcomed. 6.13 tons to a 20 feet container, 20 tons to a 40 feet container

Order,payment,terms,shipment

- 1, Minimum order: 500kg per trial order 1 piece of sample free of charge provided by approval and kept for future mass production.
- 2, Sample Lead Time: 25 working days(15 days for making the tool and 10 days making the samples. Before sending the samples to customer, samples should pass strict test in our lab.)Production Lead time: it depends on customers' order quantity (30 working days after deposit).
- 3, Payment: (Can negotiate with customers, our usual practices are as follow)
- 4, Tooling:100% prepaid by T/T.
- 5, Parts:30% upon order confirmation and balance before delivery by T/T

Applications:

Aluminum profile used in cars, trains machinery ,electronics, medical , solar panel frame and other industrial filed . In terms of hardware, machinery, electromechanical parts, solar PV products, aluminum frames are adopt as important auxiliary materials. We also have aluminum profiles for radiators, fitness machinery, buildings, lighting instrument, windpipes, oil pipelines, for instance.

Specifications:

1. Primary Technical Data

1) Chemical composition

Alloy	Si	Fe	Cu	Mn	Mg	Cr	Zn	Ti	Impurity	Al
6063	0.2-0.6	0.35	0.1	0.1	0.45-0.9	0.1	0.1	0.1	0.15	Rest
6061	0.4-0.8	0.7	0.15-0.4	0.15	0.8-1.2	0.04-0.35	0.25	0.15	0.15	Rest
6060	0.3-0.6	0.1-0.3	0.1	0.1	0.35-0.6	-	0.15	0.1	0.15	Rest
6005	0.6-0.9	0.35	0.1	0.1	0.40-0.6	0.1	0.1	0.1	0.15	Rest

2) Mechanical property

Alloy	Temper	Tensile strength	Yield strength	Elongation

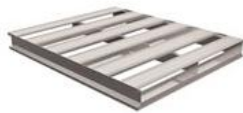
6063	T5	≥ 160Mpa	≥ 110Mpa	≥ 8%
	T6	≥ 205Mpa	≥ 180Mpa	≥ 8%
6061	T6	≥ 265Mpa	≥ 245Mpa	≥ 8%

3. Surface Treatment of Sections

(Class)	(μm), not diminish than		acid-resistant			abrasion resistance
	(Min-average film thickness)	(Min-part film thickness)	CASS		(S)	(f, g /μm)
			(h)	Class		
AA10	10	8	16	≥9	≥50	≥300
AA15	15	12	32	≥9	≥75	≥300
AA20	20	16	56	≥9	≥100	≥300
AA25	25	20	72	≥9	≥125	≥300

Competitive Advantage:

- 1, The lower cost of labor and production resources, normally 15 - 30% cost will be saved if you buy from us instead of producing by yourself.
- 2, We have the abilities and related advanced machinery to produce all kinds of parts industry use. We can provide aluminum deep processing: cutting, punching, drilling, milling, bending and manufacturing, aluminum die casting
- 3, Wonderful surface treatment, we can meet customers required on surface.
- 4, We will offer our efficient service and good quality with reasonable prices.
- 5, We will be pleasure to make a long-term business relations with you.



2-Way Lightweight Slatted Aluminum Pallet



Interlocking 4-Way Block Aluminum Pallet



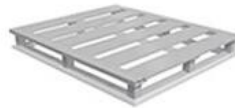
Fully Nestable 4-Way Entry with Standard Deck



2-Way Heavy Duty Channel Aluminum Pallet



Fully Nestable Aluminum Pallet



4-Way Block Medium Duty Aluminum Pallet



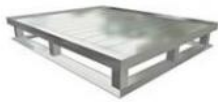
Standard 4-Way Block Aluminum Pallet



2-Way Heavy Duty Rail Aluminum Pallet



4-Way Big Block Open Bottom Aluminum Pallet



4-Way Block Solid Extruded Deck w/Lip Aluminum Pallet



4-Way Block Solid Deck Aluminum Pallet



2-Way - 3 Runner - I Beam Open Bottom Aluminum Pallet



4-Way - 3 Runner MD Block Aluminum Pallet



4-Way Block with Extruded Lip Aluminum Pallet



4-Way MD - 2 Runner Block Aluminum Pallet



Hentec Industry Co.,Ltd

FAQ For Saving Your Precious Time!

Q1: What's the thickness for anodizing?Can you do 15um?

A: Our normal thickness is about 10 um.Yes, we can do 15um and above.

Q2: What color you can do for powder coating?The thickness for powder coat?

A: We can do any color for powder coat as long as you can provide the color sample.Our normally powder coating thickness is 60-80um.

Q3: What color you can do for wood grain?

A: Our most popular colors are Western Red Cedar, Australia Cedar, Jarrah I, Jarrah II, Chestnut, Bush Cherry, Bush Wood, Western Wood, Snow Gum, etc.If you need any other colors, we can do according to the color samples you provide.

Q4: How's the weather resistance for wood grain finish D1010?

A: (1). Powder: Akzo Noble Interpon D1010.

- (2). Wood grain film:Italian Memphis.
- (3). Standard complied:American AAMA Standard.2603
- (4). UV test:1000 hours.
- (5). Salt spraying test:1000 hours.
- (6). Normal weather:10 years color guarantee.

Q5: What certification do you have?What's your standard?

A: We have ISO certification.Our standard is DIN, AAMA, AS/NZS, China GB.

Q6: What's the delivery time for samples and mass production?

A:(1). 2-3 weeks to make the new moulds and make free samples.

(2). 3-4 weeks after receipt of deposit and confirmation of the order.



Tag :

metal pallets

anodized aluminum extrusions

 **HENTEC** Hentec Industry Co.,Ltd

 +86-13861643436

 aluminum@hentec.com.cn

 aluminumextrusion-profiles.com

Qinfeng Road No.555 Huashi Town Jiangyin Jiangsu China (mainland) 214421