



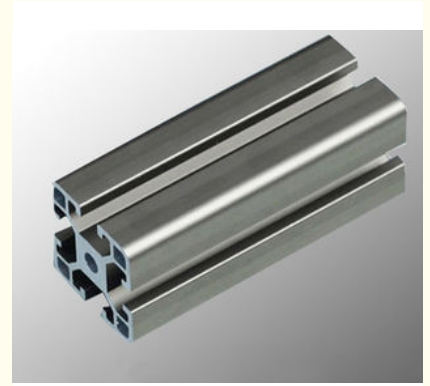
Aluminum Assembly Line Modular Aluminium Profile System With Black / Silvery Anodized

Our Product Introduction

for more products please visit us on aluminumextrusion-profiles.com

Basic Information

- Place of Origin: China
- Brand Name: HT
- Certification: SGS
- Minimum Order Quantity: 1 ton
- Packaging Details: Ep paper ,kraft ,pallet
- Delivery Time: 20days
- Payment Terms: T/T ,L/C
- Supply Ability: 100 000ton each month



Product Specification

- Product Name: Industrial Aluminium Profile
- Alloy: 6063,6061,6005
- Material: Aluminum
- Surface Treatment: Mill Finished,Anodized ,Electrophoretic Coated,Powder Spray Coated
- Deep Process: Milling, Drilling, Bending,Cutting
- Temper: T4, T5, T6 ,T66
- Highlight: **modular aluminium profile system, aluminium extrusion frame system**



Product Description

Description: Aluminum Assembly Line / Industrial Aluminum Profile / Black / Silvery Anodized

Description :

1. Material: 6063, 6061, 6060, 6005, 6005A, etc.

2. Temper: T5 or T6

3. Finish: Mill finish, anodizing, powder coating, electrophoresis, wooden transfer or PVDF/carbon-flouride coated, polishing, brushing, sand blasting

4. Various colors: Silver, bronze, black, gold, blue, grey, champagne, bright, etc.

5. Machining: Cutting, punching, drilling, tapping, milling, bending, welding, CNC etc.

6. Various in styles and sizes:

A) Aluminum alloy bars: Ranging from 1000 series to 6000 series, normal material such as 6063, 6005, 6061, 6060, special materials such as 6082 etc.

B) Aluminum profiles:

---General aluminum profiles (various shapes of pipes/tubes, angles, T or U shapes etc.)

--- Industrial aluminum profiles (TV frames, Rim for bicycles and motorcycles, Heat sink profiles, Furniture, Ladder, Guide Rail, Leisure materials, Shower Room, Solar Module Frame, Motor Shell, Pipeline Integration etc.)

--- Construction aluminum profiles (Aluminum doors& windows, Curtain Wall Frame etc.)

7. Certification: ISO9001, SGS, RoHS, TUV

8. Strong technical development ability, can provide high intensity and high ductility aluminum profiles, to meet customers' different requirements.

9. OEM service available, customized design available

Order, payment, terms, shipment

1, Minimum order: 500kg per trial order 1 piece of sample free of charge provided by approval and kept for future mass production.

2, Sample Lead Time: 25 working days(15 days for making the tool and 10 days making the samples. Before sending the samples to customer, samples should pass strict test in our lab.) Production Lead time: it depends on customers' order quantity (30 working days after deposit).

3, Payment: (Can negotiate with customers, our usual practices are as follow)

4, Tooling:100% prepaid by T/T.

5, Parts:30% upon order confirmation and balance before delivery by T/T

Applications:

Mainly used for industrial production , such as automation equipment , enclosure of the skeleton and the companies according to their own customized mold machinery and equipment , such as assembly line conveyor , hoist, dispenser, testing equipment, shelves , etc., electronic machinery industries and clean room with a gain majority.

Competitive Advantage:

1. good quality aluminium profile with economic price

2. 15-year manufacturing experience

3. ISO9000

4. ODM or OEM



FAQ For Saving Your Precious Time!

Q1:What's the thickness for anodizing?Can you do 15um?

A:Our normal thickness is about 10 um.Yes, we can do 15um and above.

Q2:What color you can do for powder coating?The thickness for powder coat?

A:We can do any color for powder coat as long as you can provide the color sample.Our normally powder coating thickness is 60-80um.

Q3:What color you can do for wood grain?

A:Our most popular colors are Western Red Cedar, Australia Cedar, Jarrah I, Jarrah II, Chestnut, Bush Cherry, Bush Wood, Western Wood, Snow Gum, etc.If you need any other colors, we can do according to the color samples you provide.

Q4:How's the weather resistance for wood grain finish D1010?

A:(1).Powder: Akzo Noble Interpon D1010.

(2).Wood grain film: Italian Memphis.

(3).Standard complied: American AAMA Standard.2603

(4).UV test:1000 hours.

(5).Salt spraying test:1000 hours.

(6).Normal weather:10 years color guarantee.

Q5:What certification do you have?What's your standard?

A:We have ISO certification.Our standard is DIN, AAMA, AS/NZS, China GB.

Q6:What's the delivery time for samples and mass production?

A:(1).2-3 weeks to make the new moulds and make free samples.

(2).3-4 weeks after receipt of deposit and confirmation of the order.

Tag :

custom extruded aluminum

 **HENTEC** Hentec Industry Co.,Ltd

 +86-13861643436

 aluminum@hentec.com.cn

 aluminumextrusion-profiles.com

Qinfeng Road No.555 Huashi Town Jiangyin Jiangsu China (mainland) 214421

