



Anodized Custom Aluminum Extrusions Aluminum 6063 Assembly Line

Our Product Introduction

for more products please visit us on aluminumextrusion-profiles.com

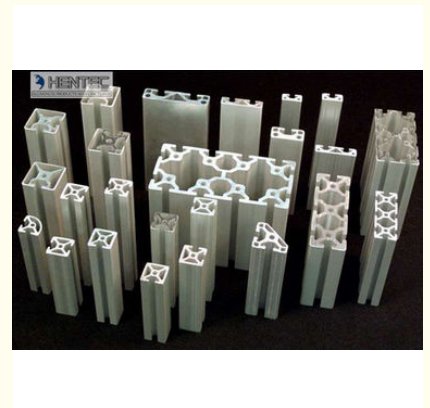
Basic Information

- Place of Origin: China
- Brand Name: HT
- Certification: CA ,CE ,ISO14001:2004, ISO9001:2000
- Minimum Order Quantity: 1 ton
- Packaging Details: Ep paper ,kraft ,pallet
- Delivery Time: 20days
- Payment Terms: T/T ,L/C
- Supply Ability: 100 000ton each month

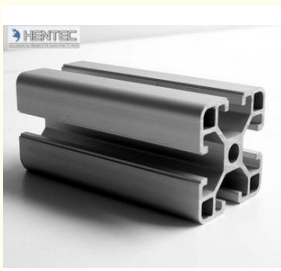


Product Specification

- Product Name: Industrial Aluminium Profile
- Alloy: 6063
- Material: Aluminum
- Surface Treatment: Fluorocarbon Powder Spray Coated /PVDF Paint, Drawbench, Steel Polished
- Deep Process: Milling, Drilling, Bending, Cutting
- Temper: T4, T5, T6
- Highlight: **aluminium extrusion frame system, custom aluminum extrusions**



More Images



Product Description

Anodized Industrial Aluminum Profile/ Aluminum 6063 Assembly Line / Production Line

Material:Aluminum

Alloy :6063,6061,6060,6005

Temper: T4, T5, T6 ,T66

Deep process: Milling, Drilling, Bending,Cutting

Description:

Item	Customized Aluminum Industrial Profile
Material	Alloy 6063, 6061,6005 or according to customer' s choice
Temper	T4, T5, T6 ,T66
Surface	Anodize (clear, satin, bronze, black, golden, silver, other multicolor) , electrophoresis, powder coating, PVDF coating, wood grain painting, etc.
MOQ	1 ton. Usually 12 tons for a 20 feet container; 24 tons for a 40 feet container.
Profile type	Industry Aluminum profile used in cars, trains machinery ,trailers ,electronics, medical and other industrial filed .
Machining	High-precision machining 1. milling; 2. Drilling; 3. Bending; 4. Cutting ...
Moulding	1. Using our moulds, free; 2. Using customer' s drawing, mould fee need to be paid .
Standard	Our Industrial Aluminium Profile Meet the China national standard GB/T5237-2004, GB/T6892-2000
FOB Port	Shanghai, etc.



Applications:

Industry Aluminum profile used in cars, trains machinery ,electronics, medical and other industrial filed . In terms of hardware, machinery, electromechanical parts, solar PV products, aluminum frames are adopt as important auxiliary materials. We also have aluminum profiles for radiators, fitness machinery, buildings, lighting instrument, windpipes, oil pipelines, for instance.



Specifications:

1.Primary Technical Data

1)Chemical composition

Alloy	Si	Fe	Cu	Mn	Mg	Cr	Zn	Ti	Impurity	Al
6063	0.2-0.6	0.35	0.1	0.1	0.45-0.9	0.1	0.1	0.1	0.15	Rest
6061	0.4-0.8	0.7	0.15-0.4	0.15	0.8-1.2	0.04-0.35	0.25	0.15	0.15	Rest
6060	0.3-0.6	0.1-0.3	0.1	0.1	0.35-0.6	-	0.15	0.1	0.15	Rest
6005	0.6-0.9	0.35	0.1	0.1	0.40-0.6	0.1	0.1	0.1	0.15	Rest

2)Mechanical property

Alloy	Temper	Tensile strength	Yield strength	Elongation
6063	T5	≥ 160Mpa	≥ 110Mpa	≥ 8%
	T6	≥ 205Mpa	≥ 180Mpa	≥ 8%
6061	T6	≥ 265Mpa	≥ 245Mpa	≥ 8%

公司图号	图 示	线密度 kg/m
HT-745		1.292
HT-746		0.786
HT-747		2.524
HT-749		0.464
HT-750		0.808
HT-751		1.616

公司图号	图 示	线密度 kg/m
HT-752		1.646
HT-753		2.952
HT-754		2.015
HT-767		1.522

Competitive Advantage:

- 1)Engineering design and support.
- 2)Aluminum profiles deeply processing:cutting,punching,drilling,milling,and fabricating.
- 3)High Quality system, strictly inspection during production and whole inspection before package.
- 4)Good performance, product warranty for 15 years.



 **HENTEC** Hentec Industry Co.,Ltd

 +86-13861643436

 aluminum@hentec.com.cn

 aluminumextrusion-profiles.com

Qinfeng Road No.555 Huashi Town Jiangyin Jiangsu China (mainland) 214421