



Custom Design Aluminium Extruded Profiles For Bathroom Aluminum Sliding Windows

Our Product Introduction

for more products please visit us on aluminumextrusion-profiles.com

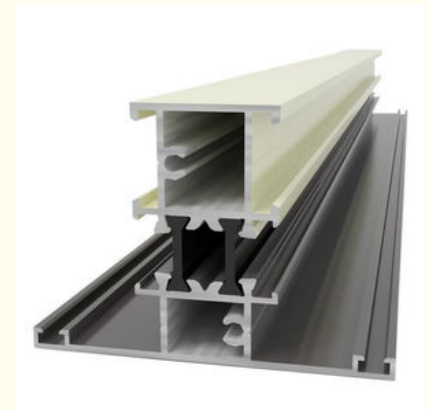
Basic Information

- Place of Origin: China
- Brand Name: HT
- Certification: CA ,CE
- Model Number: HD8088
- Minimum Order Quantity: 1 ton
- Packaging Details: EP Paper ,kraft and pallet
- Delivery Time: 20days
- Payment Terms: T/T or L/C
- Supply Ability: 100 000 ton each month



Product Specification

- Product Name: Aluminum Window Extrusion Profiles
- Alloy: 6063,6061,6005
- Material: Aluminum
- Surface Treatment: Fluorocarbon Powder Spray Coated /PVDF Paint, Drawbench,Steel Polished
- Deep Process: Milling, Drilling, Bending,Cutting
- Temper: T4, T5, T6 ,T66
- Highlight: **aluminum extrusion profiles, profile aluminum extrusions**



Product Description

Custom Design Aluminium Extruded Profiles For Bathroom Aluminum Sliding Windows

1. Alloy :6063,6061,6005 or according to customer' s choice
2. Material:Aluminum
3. Surface Treatment: Mill Finished, Anodized ,Electrophoretic coated, Powder spray coated, Fluorocarbon powder spray coated /PVDF Paint, Drawbench, Steel polished, Wood grain coated /Wooden transfer .
4. Deep process: Milling, Drilling, Bending, Cutting.
5. Application:
Used in casement doors and windows for living room, dinner room, bathroom, office room, meeting room, restaurant, hotel, etc.
6. Color: clear, satin, bronze, black, golden, silver, other multicolor
7. Temper: T4, T5, T6 , T66

Description:

The surface treatment :

Our 5500T grade extrusion machine enable us to produce any section within 400*150mm and φ360. Your drawings are definitely welcomed.

Price indication: basic aluminium ingot, extrusion cost, surfacing cost and extra.

We supply fully assembled premium grade window&door systems.

Technical requirements

- 1) Standard: GB/75237-2004, Q/320281/PDWD-2008
- 2) Certification: ISO9001
- 3) OEM service offered
- 4) Material: Alloy 6063, 6061 or according to customer' s choice
Temper: T3, T4, T5, T6
- 5) Fabrication: 1. Milling; 2. Drilling; 3. Bending; 4. Cutting...
- 6) Window Accessories: Using ECO friendly EPDM leather strap that would not age for a long time with a long service life.
- 7) MOQ: 1 ton. Usually 12 tons for a 20 feet container; 24 tons for a 40 feet container.
- 8) FOB Port: Shanghai Port

Applications:

Sliding aluminum windows, also called aluminum sliding windows, are widely used as sliding closet windows, sliding cabinet windows, sliding bathroom windows, exterior sliding windows and sliding aluminum folding windows, and so on. They have beautiful appearance and smooth surface, and are wind proofing, water proofing, and anti-erosion.

Specifications:

1. Primary Technical Data

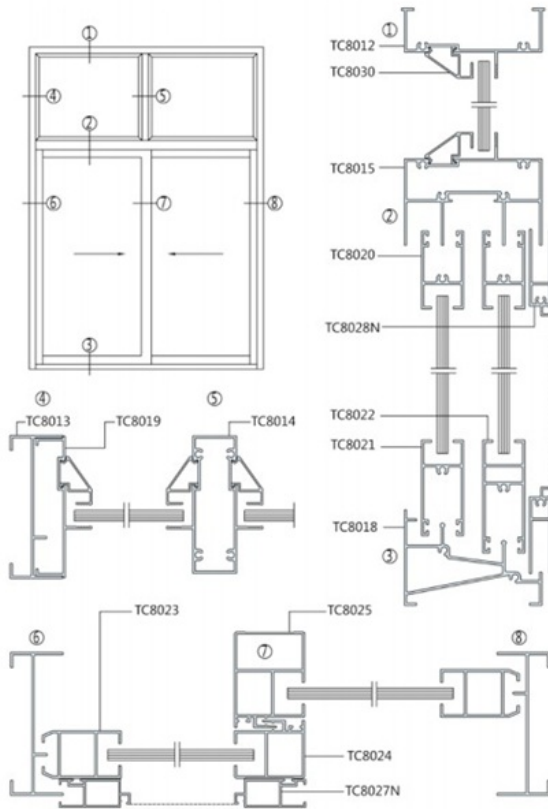
1) Chemical composition

| Alloy | Si | Fe | Cu | Mn | Mg | Cr | Zn | Ti | Impurity | Al |
|-------|---------|---------|----------|------|----------|-----------|------|------|----------|------|
| 6063 | 0.2-0.6 | 0.35 | 0.1 | 0.1 | 0.45-0.9 | 0.1 | 0.1 | 0.1 | 0.15 | Rest |
| 6061 | 0.4-0.8 | 0.7 | 0.15-0.4 | 0.15 | 0.8-1.2 | 0.04-0.35 | 0.25 | 0.15 | 0.15 | Rest |
| 6060 | 0.3-0.6 | 0.1-0.3 | 0.1 | 0.1 | 0.35-0.6 | - | 0.15 | 0.1 | 0.15 | Rest |
| 6005 | 0.6-0.9 | 0.35 | 0.1 | 0.1 | 0.40-0.6 | 0.1 | 0.1 | 0.1 | 0.15 | Rest |

2) Mechanical property

| Alloy | Temper | Tensile strength | Yield strength | Elongation |
|-------|--------|------------------|----------------|------------|
| 6063 | T5 | ≥ 160Mpa | ≥ 110Mpa | ≥ 8% |
| | T6 | ≥ 205Mpa | ≥ 180Mpa | ≥ 8% |
| 6061 | T6 | ≥ 265Mpa | ≥ 245Mpa | ≥ 8% |

2. Specifications :



Competitive Advantage:

- 1) Engineering design and support.
- 2) Aluminium profiles deeply processing: cutting, punching, drilling, milling, and fabricating.
- 3) High Quality system, strictly inspection during production and whole inspection before package.
- 4) Good performance, product warranty for 15 years.



 +86-13861643436

 aluminum@hentec.com.cn

 aluminumextrusion-profiles.com

Qinfeng Road No.555 Huashi Town Jiangyin Jiangsu China (mainland) 214421