



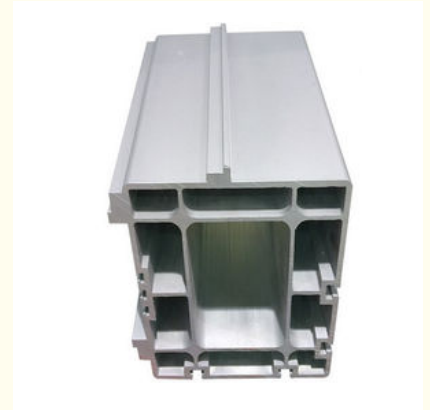
T6 6005 Aluminium Extruded Sections For Industrial Equipments Frame

Our Product Introduction

for more products please visit us on aluminumextrusion-profiles.com

Basic Information

- Place of Origin: China
- Brand Name: HENTEC
- Certification: SGS
- Minimum Order Quantity: 1 ton
- Packaging Details: Ep paper ,kraft ,pallet
- Delivery Time: 20days
- Payment Terms: T/T ,L/C
- Supply Ability: 100 000ton each month



Product Specification

- Product Name: Industrial Aluminium Profile
- Alloy: 6063,6061,6005
- Material: Aluminum
- Surface Treatment: Fluorocarbon Powder Spray Coated /PVDF Paint, Drawbench,Steel Polished
- Deep Process: Milling, Drilling, Bending,Cutting
- Temper: T3, T4, T5, T6
- Highlight: **aluminium door frame,
aluminium extruded profiles**

Product Description

T6 6005 Aluminium Extruded Sections For Industrial Equipments Frame

2. Alloy temper: 6060/6063-T6/T5;
3. Standard: EN755, ASTM B221, DIN Standard
4. Surface treatment: Mill finishes; Anodized; Powder coated, wooden grain, polished, brushed.
5. Application: Construction; Window; Door; Decoration; Architecture and etc.
6. Advantage:
 - 1) Pure 99.7% aluminum materials without any scrap used
 - 2) OEM welcome, we can design and cut die to meet customer's special demand
 - 3) Wonderful surface treatment, we can meet customers required on surface
 - 4) Strictly quality control process assured higher quality.
 - 5) Packing safety and convenient.

Description	Aluminum industrial extrusion profile	SGS TEST APPROVAL
Alloy/Temper	6061-T6/6063-T6; 6082-T6	SGS TEST APPROVAL
Surface treatment	Mill finishes; Anodized; Powder coated; Wooden grain, Machine/Acid polished and etc	SGS TEST APPROVAL
Standard apply	EN755; DIN; ASTM B221; GB5237-2008 and etc.	SGS TEST APPROVAL
Mould policy	Each item purchased volume get to 3tons, refund mould payment	SGS TEST APPROVAL
Delivery timetable	sample: within 20 days; order: within 20 days	SGS TEST APPROVAL
Payment term	20% deposit, the balance pay against B/L copy within 7 days	SGS TEST APPROVAL
Packing standard	Protected film and pearl cotton inside and shrink film outside	SGS TEST APPROVAL
Guarantee term	If the shipped products can not meet required, the total order amount will be refund back without delay, or arrange new replacement cargoes instead.	SGS TEST APPROVAL

Applications:

Industry Aluminum profile used in cars, trains machinery, electronics, medical and other industrial filed. In terms of hardware, machinery, electromechanical parts, solar PV products, aluminum frames are adopted as important auxiliary materials. We also have aluminum profiles for radiators, fitness machinery, buildings, lighting instrument, windpipes, oil pipelines, for instance.

Specifications:

1. Primary Technical Data

1) Chemical composition

Alloy	Si	Fe	Cu	Mn	Mg	Cr	Zn	Ti	Impurity	Al
6063	0.2-0.6	0.35	0.1	0.1	0.45-0.9	0.1	0.1	0.1	0.15	Rest
6061	0.4-0.8	0.7	0.15-0.4	0.15	0.8-1.2	0.04-0.35	0.25	0.15	0.15	Rest
6060	0.3-0.6	0.1-0.3	0.1	0.1	0.35-0.6	-	0.15	0.1	0.15	Rest
6005	0.6-0.9	0.35	0.1	0.1	0.40-0.6	0.1	0.1	0.1	0.15	Rest

2) Mechanical property

Alloy	Temper	Tensile strength	Yield strength	Elongation
6063	T5	≥ 160Mpa	≥ 110Mpa	≥ 8%
	T6	≥ 205Mpa	≥ 180Mpa	≥ 8%
6061	T6	≥ 265Mpa	≥ 245Mpa	≥ 8%

新图号 旧图号	简图	线密度 kg/m	新图号 旧图号	简图	线密度 kg/m
GQ001 G671		5.445	GQ007 G020		43.160
GQ002 G675		16.074	GQ008 G485		51.131
GQ003 G676		25.70	GQ009 G169		51.840
GQ004 G179		24.030	GQ010 G434		61.120
GQ005 G412		30.877	GQ011 G249		58.323
GQ006 G677		33.111	GQ020 G852		5.650

新图号 旧图号	简图	线密度 kg/m	新图号 旧图号	简图	线密度 kg/m
GQ021 G853		7.780	GQ024 G571		3.422
GQ022 G854		11.020	GQ040 G166		30.380
GQ023 G855		14.520	GQ011 G348		6.958
GQ024 G856		20.510	GQ044 G362		9.560
GQ025 GQ052		24.770	GQ016 G364		12.795
GQ031 G288		5.710	GQ019 G441		17.270

- 1.Alloy :6063,6061,6005 or according to customer' s choice
- 2.Material:Aluminum
- 3.Suface Treatment: Mill Finished,Anodized ,Electrophoretic coated,Powder spray coated,Fluorocarbon powder spray coated /PVDF Paint, Drawbench,Steel polished,Wood grain coated /Wooden transfer .
- 4.Deep process: Milling, Drilling, Bending,Cutting.
- 5.Application:
Industry Aluminum profile used in cars, trains machinery ,electronics, medical and other industrial filed . In terms of hardware, machinery, electromechanical parts, solar PV products, aluminum frames are adopt as important auxiliary materials. We also have aluminum profiles for radiators, fitness machinery, buildings, lighting instrument, windpipes, oil pipelines, for instance.
- 6.Color:clear, satin, bronze, black, golden, silver, other multicolor

7.Temper: T4, T5, T6 ,T66

Competitive Advantage:

- 1)Engineering design and support.
- 2)Aluminium profiles deeply processing:cutting,punching,drilling,milling,and fabricating.
- 3)High Quality system, strictly inspection during production and whole inspection before package.
- 4)Good performance, product warranty for 15 years.



+86-13861643436



aluminum@hentec.com.cn



aluminumextrusion-profiles.com

Qinfeng Road No.555 Huashi Town Jiangyin Jiangsu China (mainland) 214421