

Handle Aluminum / Zinc Window Door Accessories Series For Two Lock Handle

Our Product Introduction

for more products please visit us on aluminumextrusion-profiles.com

Basic Information

- Place of Origin: CHINA
- Brand Name: Shengsai/Longshan/Xieji(blong to one factory)
- Certification: ISO9001-2008
- Minimum Order Quantity: 1
- Packaging Details: Package:Carton+Wooden Pallet/Box >= 5days
- Delivery Time: >=5 days
- Payment Terms: T/T



Product Specification

- Material: Aluminum Or Zinc
- Surface Treatment: Powder Painted Or Customer'srequirement
- Color: Generally White/black Or Customer's Requirement
- Package: Carton And Pallet
- Usage: Two Lock Handle
- Type: Handle
- Highlight: **replacement window parts, sliding door handles**



Product Description

Our company have the **advanced cutting and stamping equipments**.We can **cut,stamp and other process according to the size of different aluminum**.

Our company can **undertake the production of zinc/aluminum alloy die-casting mold,stainless steel stamping die**.Hot die casting machine 90T,Cold die casting 180T/400T/950T and **all spray polishing equipments provide the external processing** .

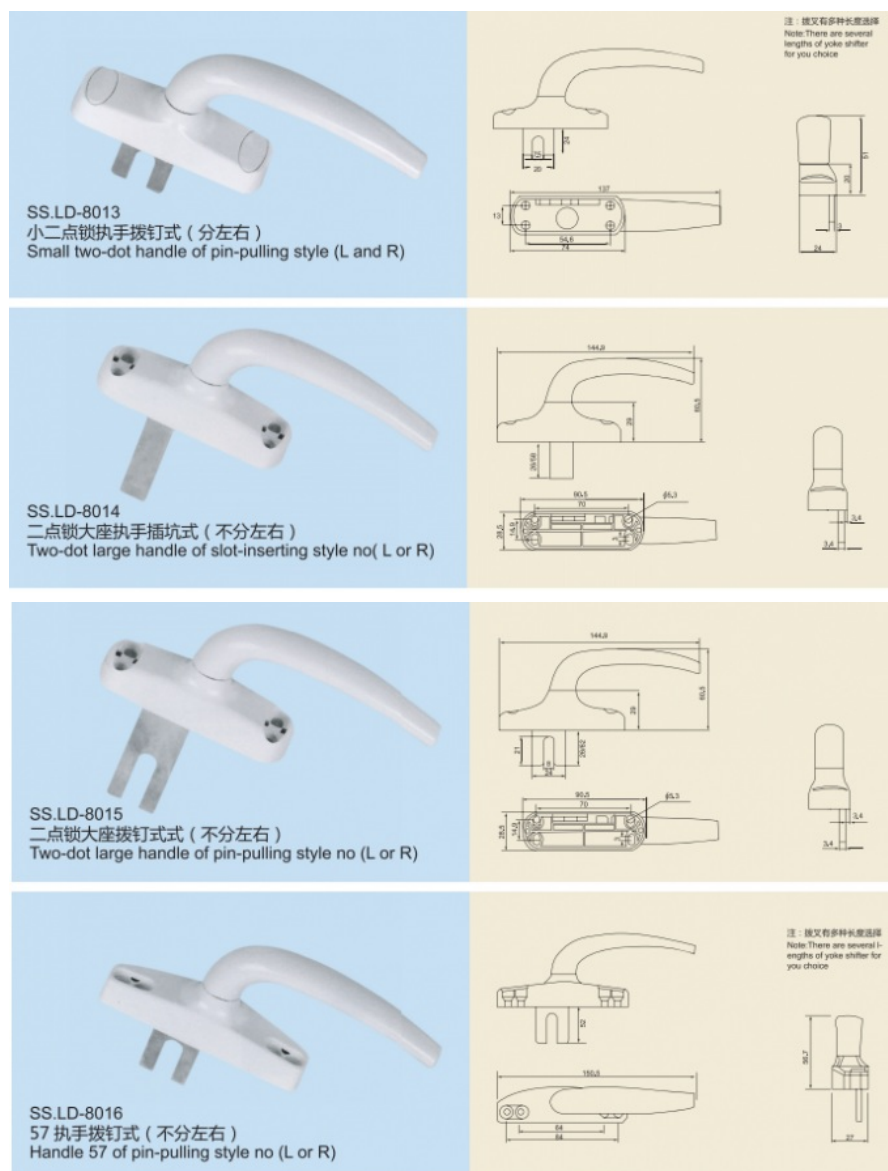
TWO LOCK HANDLE SERIES

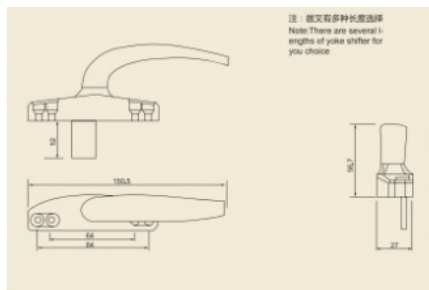
All the productions blow can be made of **aluminum** or **zinc**.**Surface treatment and color** can be produced according to the customer's requirement.**Any different types and sizes of the handles** can be produced according to the customer's requirement.

Sets include:

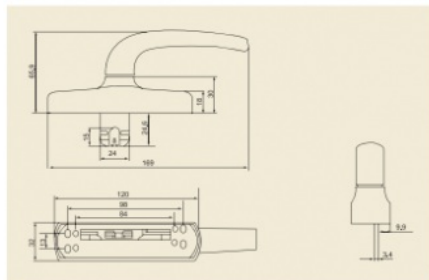
- Small Two-dot handle of pin-pulling style(L and R)SS.LD-8013
- Two-dot large handle of slot-inserting style (no L or R)SS.LD-8014
- Two-dot large handle of pinpulling style (no L or R)SS.LD-8015
- Handle 57 of pin-pulling style (no L or R)SS.LD-8016
- Handle 57 of slot-inserting style (no L or R)SS.LD-8017
- Handle of C Two-dot handle of pin-pulling style(no L or R)SS.LD-8018
- Handle of C Two-dot handle of plugging styleSS.LD-8019
- Medium Two-dot handle(no L or R)SS.LD-8020

Note:There are several lengths of yoke shifter for your choice

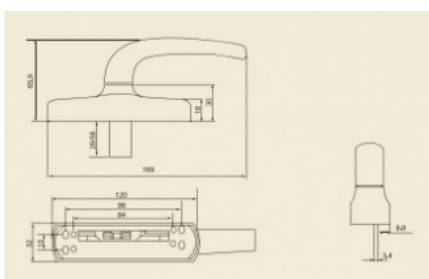




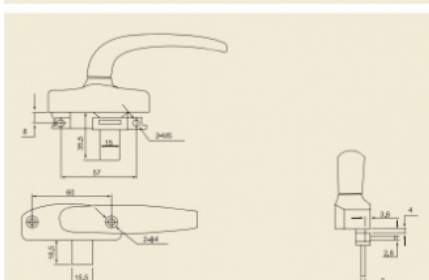
SS.LD-8017
57 执手插坑式 (不分左右)
Handle 57 of slot-inserting style(no L or R)



SS.LD-8018
两点锁 C 执手拔钉式 (不分左右)
Handle of C Two-dot lock of pin-pulling style(no L or R)



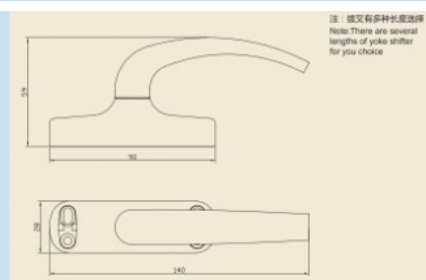
SS.LD-8019
两点锁 C 执手插坑式 (不分左右)
Handle of C Two-dot lock of(no L or R)



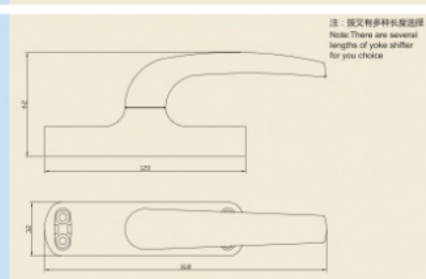
SS.LD-8020
中二点锁执手 (不分左右)
Medium Two-dot handle(no L or R)

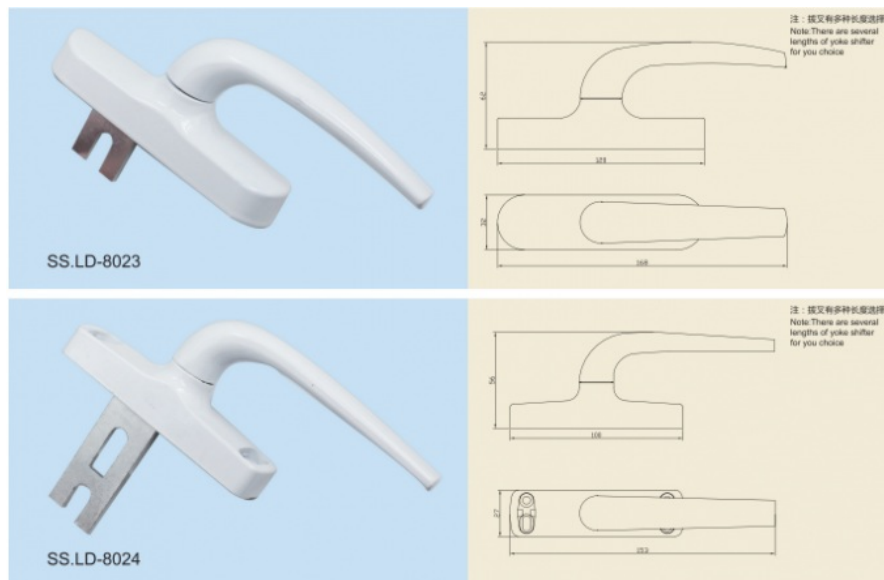


SS.LD-8021



SS.LD-8022





Key Specifications/Special Features:

Material: aluminum alloy and zinc alloy

Surface treatment: powder coating OR based on customer's requirements

Package: carton or pallet, or according to customer's requirements

Sample lead time: sample for 1-3 working days

Delivery lead time: within 15 days after the receipt of payment (according to the order quantity)

Primary Competitive Advantages:

1. Professional: Almost 20 years' experience in accessories for door and window.
2. Popular over the world: Over 20 market countries, including Japan, European and Indonesia.
3. Advantage: Great quality with competitive price.
4. OEM offered: Technical drawings, samples or photos are needed
5. Small order received due to the stock system we have.

FAQ

Q: How to get a quotation and start business relationship with your company?

A: Please send us email and our sales representative will contact you as soon as we receive your email.

Q: How to receive a quotation in the shortest time?

A: When you send us an enquiry, please try to provide more details, such as product size, photo or drawing, order quantity, etc. With these, the sales representative can offer you an accurate quotation

Q: How to start an OEM project with your company?

A: Please send us your designed drawings or original samples so that we can offer a quotation first. If all details are confirmed, we will arrange sample production once received your deposit.

Q: What's your MOQ?

A: The MOQ depends on the design and production processes of the products. Normally if we have your product in stock, 100 pieces is also OK. But it can be much more or less depending on different product types. Therefore, we recommend you to tell us your required quantity first.

Q: How long can I receive an order?

A: That depends on the specific items and your order quantity. The lead-time varies from 7 to 90 days.

Design: our company has a really professional design team. They work together to provide a perfect solution according to your special requirements combined with favorable market conditions at the shortest time. They are really efficient.

Production: Our company has a complete industrial-scale, highly-skilled professional production team, mature production technology, high productivity and perfect quality control system to enable the consistency of production from stamping to resin molding, welding, assembly, surface treatment and so forth.

Price: Our company has a set of methods concerning scientific management, cost control, reasonable configuration, we will provide you with the best possible price in the premise of the same materials, the same process.

Service: Our company will work out each of our guest company the most personal service, provide a service team to implement pre-sale, sale, then after-sales service and try our very best to complete utmost customer satisfaction.

We have professional **technical team, quality supervision group, advanced automation production equipment and testing machines**, strictly carry out ISO9001: 2008 International Quality Control to ensure the excellent quality.

We sincerely serve every customer. **Welcome** customers from all over the world to establish good & long business relationship with us and benefit from our rich experience and resource. You may rest assured that we will satisfy you by providing quality products, competitive price, timely delivery and good services.