



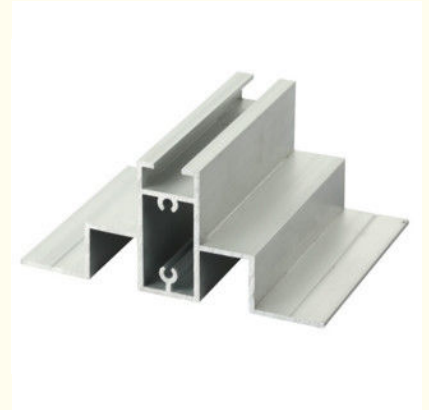
T5 Powder Coating Aluminium Window Extrusion Profiles For Casement Window

Our Product Introduction

for more products please visit us on aluminumextrusion-profiles.com

Basic Information

- Place of Origin: China
- Brand Name: HT
- Certification: CA ,CE
- Minimum Order Quantity: 1 ton
- Packaging Details: EP Paper ,kraft and pallet
- Delivery Time: 20days
- Payment Terms: T/T or L/C
- Supply Ability: 100 000 ton each month

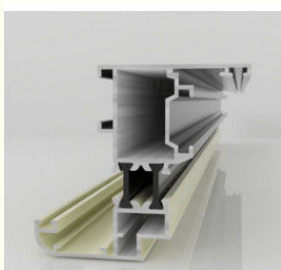


Product Specification

- Material: Aluminum Alloy
- Temper: T5
- Alloy: 6063
- Surface: Powder Coating
- Color: Customized
- Highlight: **aluminum extrusion profiles,
extruded aluminium profiles**



More Images



Product Description

Description:

Description	Powder Coating Aluminum Window Extrusion Profiles For Casement Window	
Alloy/Temper	6063-T5/6060-T5; 6063-T6/6060-T6	
Surface treatment	Mill finishes; Anodized; Powder coated; Wooden grain, Machine/Acid polished and etc	SGS TEST APPROVAL
Standard apply	EN755; DIN; ASTM B221; GB5237-2008 and etc.	SGS TEST APPROVAL
Price	SMM/LME Primary aluminum price + the most competitive conversion cost	
Delivery timetable	sample: within 15 days; order: within 15 -20 days	SGS TEST APPROVAL
Payment term	20% deposit, the balance pay against B/L copy within 7 days	SGS TEST APPROVAL
Packing standard	Protected film and pearl cotton inside and shrink film outside	SGS TEST APPROVAL
Guarantee term	If the shipped products can not meet required, the total order amount will be refund back without delay, or arrange new replacement cargoes instead.	SGS TEST APPROVAL

Order, payment, terms, shipment

- 1, Minimum order: 500kg per trial order 1 piece of sample free of charge provided by approval and kept for future mass production.
- 2, Sample Lead Time: 25 working days (15 days for making the tool and 10 days making the samples. Before sending the samples to customer, samples should pass strict test in our lab.) Production Lead time: it depends on customers' order quantity (30 working days after deposit).
- 3, Payment: (Can negotiate with customers, our usual practices are as follow)
- 4, Tooling: 100% prepaid by T/T.
- 5, Parts: 30% upon order confirmation and balance before delivery by T/T

Applications:

Aluminum profile used for making aluminum door .There are many colors can be selected for surface treatment .The strength can be increased by higher wall thickness . It is possible to produce according to customized design .



Specifications:

1. Primary Technical Data

1) Chemical composition

Alloy	Si	Fe	Cu	Mn	Mg	Cr	Zn	Ti	Impurity	Al
6063	0.2-0.6	0.35	0.1	0.1	0.45-0.9	0.1	0.1	0.1	0.15	Rest
6061	0.4-0.8	0.7	0.15-0.4	0.15	0.8-1.2	0.04-0.35	0.25	0.15	0.15	Rest

6060	0.3-0.6	0.1-0.3	0.1	0.1	0.35-0.6	-	0.15	0.1	0.15	Rest
6005	0.6-0.9	0.35	0.1	0.1	0.40-0.6	0.1	0.1	0.1	0.15	Rest

2) Mechanical property

Alloy	Temper	Tensile strength	Yield strength	Elongation
6063	T5	≥ 160Mpa	≥ 110Mpa	≥ 8%
	T6	≥ 205Mpa	≥ 180Mpa	≥ 8%
6061	T6	≥ 265Mpa	≥ 245Mpa	≥ 8%

Competitive Advantage:

1. Offer OEM service.
2. Surface Treatment: Mill finished, wooden finished, Anodized, Powder coated, Printed, Polished.
3. Our Extrusion Machine are available to produce the thinnest of aluminium profile is 0.3 mm.
4. Color Choice: any color you want for powder coated, but for anodized we have five normal color for your choice: Matte silver, Silver, Bronze, Dark, Champagne.
5. Stable delivery time.



Tag :
aluminium sliding window sections
powder coating aluminium window frames